

Datasheet for ABIN3028563
anti-Ceruloplasmin antibody (AA 547-577)[Go to Product page](#)

5 Images

Overview

Quantity:	0.4 mL
Target:	Ceruloplasmin (CP)
Binding Specificity:	AA 547-577
Reactivity:	Human, Mouse
Host:	Rabbit
Clonality:	Polyclonal
Conjugate:	This Ceruloplasmin antibody is un-conjugated
Application:	Western Blotting (WB), Immunohistochemistry (IHC), ELISA, Flow Cytometry (FACS)

Product Details

Immunogen:	A portion of amino acids 547-577 from the human protein was used as the immunogen for this CP antibody.
Isotype:	Ig Fraction
Purification:	Purified

Target Details

Target:	Ceruloplasmin (CP)
Alternative Name:	CP (CP Products)
Background:	Ceruloplasmin is a metalloprotein that binds most of the copper in plasma and is involved in the peroxidation of Fe(II) transferrin to Fe(III) transferrin. Mutations in this protein cause aceruloplasminemia, which results in iron accumulation and tissue damage, and is associated

Target Details

	with diabetes and neurologic abnormalities.
UniProt:	P00450
Pathways:	Transition Metal Ion Homeostasis

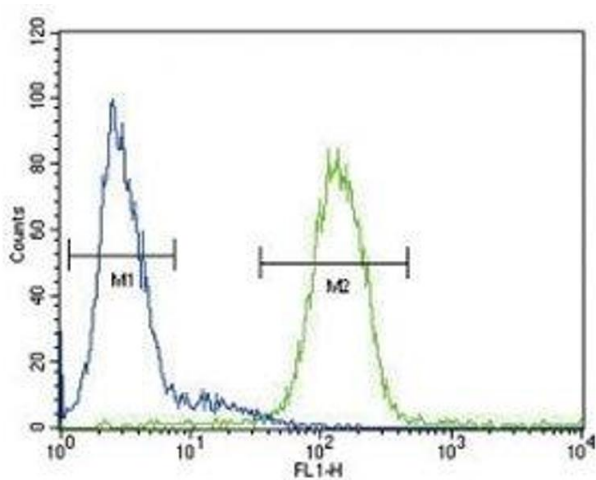
Application Details

Application Notes:	Titration of the CP antibody may be required due to differences in protocols and secondary/substrate sensitivity.\. Western blot: 1:1000,IHC (Paraffin): 1:10-1:50,Flow Cytometry: 1:10-1:50
Restrictions:	For Research Use only

Handling

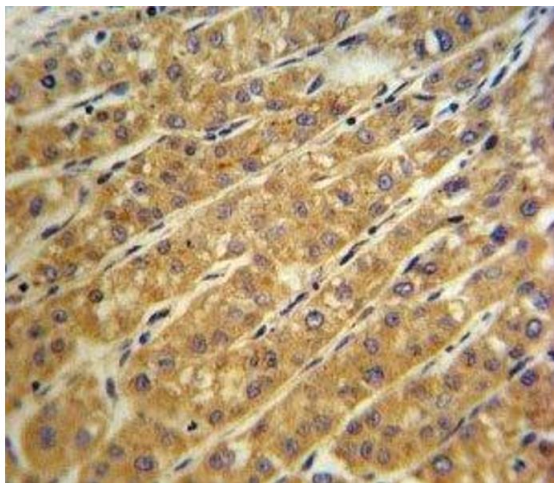
Format:	Liquid
Buffer:	In 1X PBS, pH 7.4, with 0.09 % sodium azide
Preservative:	Sodium azide
Precaution of Use:	This product contains Sodium azide: a POISONOUS AND HAZARDOUS SUBSTANCE which should be handled by trained staff only.
Storage:	-20 °C
Storage Comment:	Aliquot the CP antibody and store frozen at -20°C or colder. Avoid repeated freeze-thaw cycles.

Images



Flow Cytometry

Image 1. CP antibody flow cytometric analysis of HepG2 cells (green) compared to a negative control (blue). FITC-conjugated goat-anti-rabbit secondary Ab was used for the analysis.



Immunohistochemistry

Image 2. CP antibody IHC analysis in formalin fixed and paraffin embedded human hepatocarcinoma.



Western Blotting

Image 3. Western blot analysis of CP antibody and mouse lung tissue lysate. Predicted molecular weight ~130 kDa.

Please check the [product details page](#) for more images. Overall 5 images are available for ABIN3028563.