

Datasheet for ABIN3028569

anti-Choline Acetyltransferase antibody (AA 98-128)

5 Images

[Go to Product page](#)

Overview

Quantity:	0.4 mL
Target:	Choline Acetyltransferase (CHAT)
Binding Specificity:	AA 98-128
Reactivity:	Human, Mouse
Host:	Rabbit
Clonality:	Polyclonal
Conjugate:	This Choline Acetyltransferase antibody is un-conjugated
Application:	Western Blotting (WB), ELISA, Immunofluorescence (IF)

Product Details

Immunogen:	A portion of amino acids 98-128 from the human protein was used as the immunogen for this CHAT antibody.
Isotype:	Ig Fraction
Purification:	Purified

Target Details

Target:	Choline Acetyltransferase (CHAT)
Alternative Name:	CHAT (CHAT Products)
Background:	<p>CHAT is an enzyme which catalyzes the biosynthesis of the neurotransmitter acetylcholine.</p> <p>This gene product is a characteristic feature of cholinergic neurons, and changes in these neurons may explain some of the symptoms of Alzheimer disease.</p>

Target Details

UniProt:	P28329
Pathways:	Skeletal Muscle Fiber Development

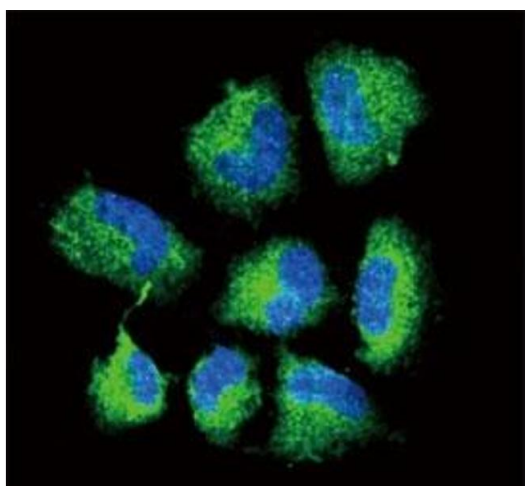
Application Details

Application Notes:	Titration of the CHAT antibody may be required due to differences in protocols and secondary/substrate sensitivity.\. Western blot: 1:1000,Immunofluorescence: 1:10-1:50
Restrictions:	For Research Use only

Handling

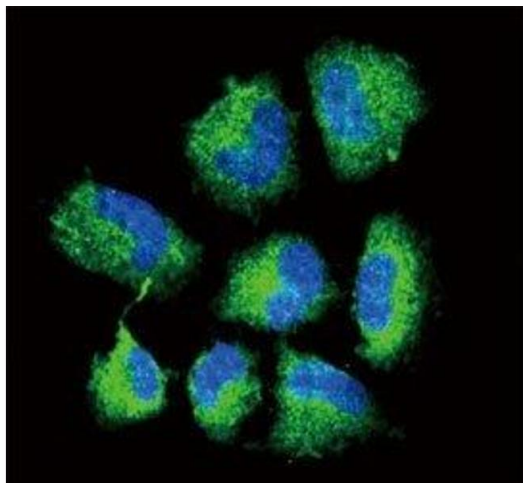
Format:	Liquid
Buffer:	In 1X PBS pH 7.4 with 0.09 % sodium azide
Preservative:	Sodium azide
Precaution of Use:	This product contains Sodium azide: a POISONOUS AND HAZARDOUS SUBSTANCE which should be handled by trained staff only.
Storage:	-20 °C
Storage Comment:	Aliquot the CHAT antibody and store frozen at -20°C or colder. Avoid repeated freeze-thaw cycles.

Images



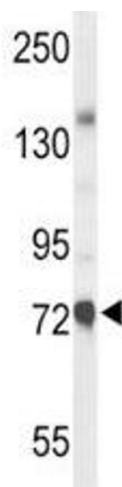
Immunofluorescence

Image 1. Confocal immunofluorescent analysis of CHAT antibody with NCI-H460 cells followed by Alexa Fluor 488-conjugated goat anti-rabbit IgG (green). DAPI was used as a nuclear counterstain (blue).



Immunofluorescence

Image 2. Confocal immunofluorescent analysis of CHAT antibody with NCI-H460 cells followed by Alexa Fluor 488-conjugated goat anti-rabbit IgG (green). DAPI was used as a nuclear counterstain (blue).



Western Blotting

Image 3. Western blot analysis of CHAT antibody and mouse liver tissue lysate

Please check the [product details page](#) for more images. Overall 5 images are available for ABIN3028569.