

Datasheet for ABIN3028572

**anti-Claudin 2 antibody (AA 190-220)****2** Images[Go to Product page](#)

## Overview

Quantity:	0.4 mL
Target:	Claudin 2 (CLDN2)
Binding Specificity:	AA 190-220
Reactivity:	Human
Host:	Rabbit
Clonality:	Polyclonal
Conjugate:	This Claudin 2 antibody is un-conjugated
Application:	Western Blotting (WB), ELISA

## Product Details

Immunogen:	A portion of amino acids 190-220 from the human protein was used as the immunogen for this Claudin 2 antibody.
Isotype:	Ig Fraction
Purification:	Antigen affinity purified

## Target Details

Target:	Claudin 2 (CLDN2)
Alternative Name:	Claudin 2 ( <a href="#">CLDN2 Products</a> )
Background:	Members of the claudin protein family, such as CLDN2, are expressed in an organ-specific manner and regulate the tissue-specific physiologic properties of tight junctions.

Target Details

UniProt:	P57739
Pathways:	Hepatitis C

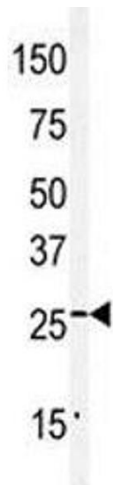
Application Details

Application Notes:	Titration of the Claudin 2 antibody may be required due to differences in protocols and secondary/substrate sensitivity.\. Western blot: 1:1000
Restrictions:	For Research Use only

Handling

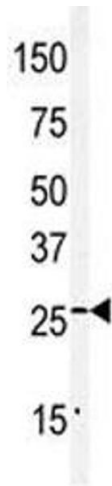
Format:	Liquid
Buffer:	In 1X PBS, pH 7.4, with 0.09 % sodium azide
Preservative:	Sodium azide
Precaution of Use:	This product contains Sodium azide: a POISONOUS AND HAZARDOUS SUBSTANCE which should be handled by trained staff only.
Storage:	-20 °C
Storage Comment:	Aliquot the Claudin 2 antibody and store frozen at -20°C or colder. Avoid repeated freeze-thaw cycles.

Images



Western Blotting

**Image 1.** Western blot analysis of Claudin 2 antibody and mouse kidney tissue lysate.



Western Blotting

**Image 2.** Western blot analysis of Claudin 2 antibody and mouse kidney tissue lysate.