

Datasheet for ABIN3028577
anti-C8B antibody (AA 393-422)[Go to Product page](#)

2 Images

Overview

Quantity:	0.4 mL
Target:	C8B
Binding Specificity:	AA 393-422
Reactivity:	Human
Host:	Rabbit
Clonality:	Polyclonal
Conjugate:	This C8B antibody is un-conjugated
Application:	Western Blotting (WB), ELISA

Product Details

Immunogen:	A portion of amino acids 393-422 from the human protein was used as the immunogen for this C8B antibody.
Isotype:	Ig Fraction
Purification:	Antigen affinity purified

Target Details

Target:	C8B
Alternative Name:	Complement C8 beta (C8B) (C8B Products)
Background:	C8 beta is one of the three subunits that comprise the component 8 (C8) of the complement system. C8 participates in the formation of Membrane Attack Complex that results in the lysis of cells. Patients with C8B deficiency are prone to bacteria infection.

Target Details

UniProt:	P07358
Pathways:	Complement System

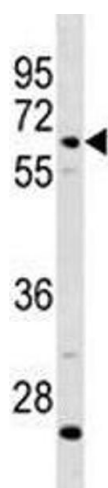
Application Details

Application Notes:	Titration of the C8B antibody may be required due to differences in protocols and secondary/substrate sensitivity.\. Western blot: 1:1000
Restrictions:	For Research Use only

Handling

Format:	Liquid
Buffer:	In 1X PBS, pH 7.4, with 0.09 % sodium azide
Preservative:	Sodium azide
Precaution of Use:	This product contains Sodium azide: a POISONOUS AND HAZARDOUS SUBSTANCE which should be handled by trained staff only.
Storage:	-20 °C
Storage Comment:	Aliquot the C8B antibody and store frozen at -20°C or colder. Avoid repeated freeze-thaw cycles.

Images



Western Blotting

Image 1. C8B antibody western blot analysis in CEM lysate



Western Blotting

Image 2. C8B antibody western blot analysis in CEM lysate