



[Go to Product page](#)

Datasheet for ABIN3028581
anti-Cyclin A antibody (AA 51-84)

5 Images

Overview

| | |
|----------------------|---|
| Quantity: | 0.4 mL |
| Target: | Cyclin A (CCNA2) |
| Binding Specificity: | AA 51-84 |
| Reactivity: | Human |
| Host: | Rabbit |
| Clonality: | Polyclonal |
| Conjugate: | This Cyclin A antibody is un-conjugated |
| Application: | Western Blotting (WB), Immunohistochemistry (IHC), ELISA, Flow Cytometry (FACS) |

Product Details

| | |
|---------------|--|
| Immunogen: | A portion of amino acids 51-84 from the human protein was used as the immunogen for this Cyclin A2 antibody. |
| Isotype: | Ig Fraction |
| Purification: | Purified |

Target Details

| | |
|-------------|--|
| Target: | Cyclin A (CCNA2) |
| Abstract: | CCNA2 Products |
| Background: | CCNA2 is essential for the control of the cell cycle at the G1/S (start) and the G2/M (mitosis) transitions. [UniProt] |

Target Details

UniProt: [P20248](#)

Pathways: [PI3K-Akt Signaling](#), [Cell Division Cycle](#), [AMPK Signaling](#), [Mitotic G1-G1/S Phases](#), [DNA Replication](#), [M Phase](#), [Synthesis of DNA](#)

Application Details

Application Notes: The stated application concentrations are suggested starting amounts. Titration of the Cyclin A2 antibody may be required due to differences in protocols and secondary/substrate sensitivity.\. Western blot: 1:1000,IHC (Paraffin): 1:50-1:100,Flow Cytometry: 1:10-1:50

Restrictions: For Research Use only

Handling

Format: Liquid

Buffer: In 1X PBS, pH 7.4, with 0.09 % sodium azide

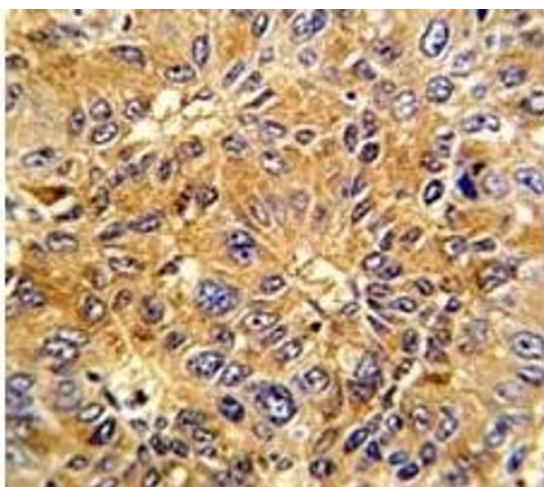
Preservative: Sodium azide

Precaution of Use: This product contains Sodium azide: a POISONOUS AND HAZARDOUS SUBSTANCE which should be handled by trained staff only.

Storage: -20 °C

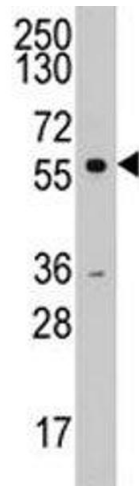
Storage Comment: Store at 4°C for up to one month. For long term, aliquot the Cyclin A2 antibody and store frozen at -20°C or colder. Avoid repeated freeze-thaw cycles.

Images



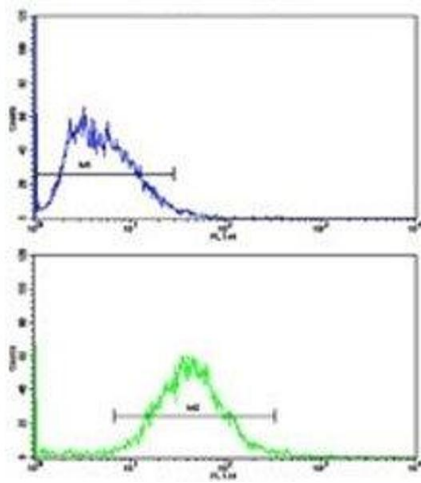
Immunohistochemistry

Image 1. IHC analysis of FFPE human hepatocarcinoma with Cyclin A2 antibody



Western Blotting

Image 2. Western blot analysis of Cyclin A2 antibody and K562 lysate. Predicted molecular weight ~50 kDa



Flow Cytometry

Image 3. Flow cytometric analysis of HepG2 cells using Cyclin A2 antibody (bottom histogram) compared to a negative control (top histogram). FITC-conjugated goat-anti-rabbit secondary Ab was used for the analysis.

Please check the [product details page](#) for more images. Overall 5 images are available for ABIN3028581.