



[Go to Product page](#)

Datasheet for ABIN3028588

## anti-Cyclin B2 antibody (AA 72-99)

### 2 Images

#### Overview

Quantity:	0.4 mL
Target:	Cyclin B2 (CCNB2)
Binding Specificity:	AA 72-99
Reactivity:	Human
Host:	Rabbit
Clonality:	Polyclonal
Conjugate:	This Cyclin B2 antibody is un-conjugated
Application:	ELISA, Western Blotting (WB)

#### Product Details

Immunogen:	A portion of amino acids 72-99 from the human protein was used as the immunogen for this Cyclin B2 antibody.
Isotype:	Ig Fraction
Cross-Reactivity (Details):	Expected species reactivity: Primate
Purification:	Antigen affinity purified

#### Target Details

Target:	Cyclin B2 (CCNB2)
Abstract:	<a href="#">CCNB2 Products</a>
Background:	Essential for the control of the cell cycle at the G2/M (mitosis) transition. [UniProt]

## Target Details

UniProt: [O95067](#)

Pathways: [Cell Division Cycle, M Phase](#)

## Application Details

Application Notes: Titration of the Cyclin B2 antibody may be required due to differences in protocols and secondary/substrate sensitivity.\. Western blot: 1:1000

Restrictions: For Research Use only

## Handling

Format: Liquid

Buffer: In 1X PBS, pH 7.4, with 0.09 % sodium azide

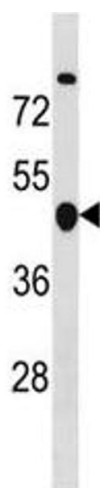
Preservative: Sodium azide

Precaution of Use: This product contains Sodium azide: a POISONOUS AND HAZARDOUS SUBSTANCE which should be handled by trained staff only.

Storage: -20 °C

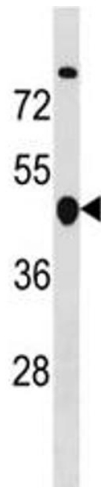
Storage Comment: Aliquot the Cyclin B2 antibody and store frozen at -20°C or colder. Avoid repeated freeze-thaw cycles.

## Images



### Western Blotting

**Image 1.** Cyclin B2 antibody western blot analysis in MDA-MB453 lysate. Predicted molecular weight ~44 kDa



### Western Blotting

**Image 2.** Cyclin B2 antibody western blot analysis in MDA-MB453 lysate. Predicted molecular weight ~44 kDa