

Datasheet for ABIN3028589

anti-Cyclin B2 antibody (AA 182-209)**2** Images[Go to Product page](#)

Overview

Quantity:	0.4 mL
Target:	Cyclin B2 (CCNB2)
Binding Specificity:	AA 182-209
Reactivity:	Human
Host:	Rabbit
Clonality:	Polyclonal
Conjugate:	This Cyclin B2 antibody is un-conjugated
Application:	ELISA, Western Blotting (WB)

Product Details

Immunogen:	A portion of amino acids 182-209 from the human protein was used as the immunogen for this Cyclin B2 antibody.
Isotype:	Ig Fraction
Cross-Reactivity (Details):	Expected species reactivity: Primate
Purification:	Antigen affinity purified

Target Details

Target:	Cyclin B2 (CCNB2)
Abstract:	CCNB2 Products
Background:	Essential for the control of the cell cycle at the G2/M (mitosis) transition. [UniProt]

Target Details

UniProt:	O95067
Pathways:	Cell Division Cycle, M Phase

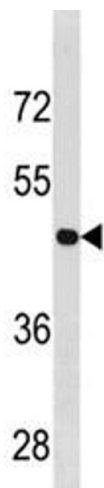
Application Details

Application Notes:	Titration of the Cyclin B2 antibody may be required due to differences in protocols and secondary/substrate sensitivity.\. Western blot: 1:1000
Restrictions:	For Research Use only

Handling

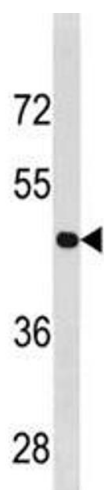
Format:	Liquid
Buffer:	In 1X PBS, pH 7.4, with 0.09 % sodium azide
Preservative:	Sodium azide
Precaution of Use:	This product contains Sodium azide: a POISONOUS AND HAZARDOUS SUBSTANCE which should be handled by trained staff only.
Storage:	-20 °C
Storage Comment:	Aliquot the Cyclin B2 antibody and store frozen at -20°C or colder. Avoid repeated freeze-thaw cycles.

Images



Western Blotting

Image 1. Cyclin B2 antibody western blot analysis in U251 lysate. Predicted molecular weight ~44 kDa



Western Blotting

Image 2. Cyclin B2 antibody western blot analysis in U251 lysate. Predicted molecular weight ~44 kDa