

Datasheet for ABIN3028590  
**anti-Cyclin B3 antibody (AA 1311-1338)**[Go to Product page](#)

## 2 Images

## Overview

Quantity:	0.4 mL
Target:	Cyclin B3 (CCNB3)
Binding Specificity:	AA 1311-1338
Reactivity:	Human
Host:	Rabbit
Clonality:	Polyclonal
Conjugate:	This Cyclin B3 antibody is un-conjugated
Application:	ELISA, Western Blotting (WB)

## Product Details

Immunogen:	A portion of amino acids 1311-1338 from the human protein was used as the immunogen for this Cyclin B3 antibody.
Isotype:	Ig Fraction
Purification:	Antigen affinity purified

## Target Details

Target:	Cyclin B3 (CCNB3)
Abstract:	<a href="#">CCNB3 Products</a>
Background:	CCNB3 is a mitotic cyclin that shares homology with cyclins of the A and B types. [OMIM]
UniProt:	<a href="#">Q8WWL7</a>

## Target Details

Pathways: [Cell Division Cycle, Chromatin Binding](#)

## Application Details

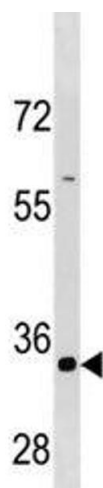
Application Notes: The stated application concentrations are suggested starting amounts. Titration of the Cyclin B3 antibody may be required due to differences in protocols and secondary/substrate sensitivity.\. Western blot: 1:1000

Restrictions: For Research Use only

## Handling

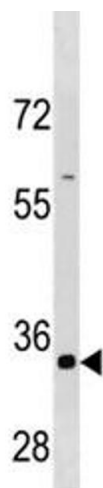
Format:	Liquid
Buffer:	In 1X PBS, pH 7.4, with 0.09 % sodium azide
Preservative:	Sodium azide
Precaution of Use:	This product contains Sodium azide: a POISONOUS AND HAZARDOUS SUBSTANCE which should be handled by trained staff only.
Storage:	-20 °C
Storage Comment:	Store at 4°C for up to one month. For long term, aliquot the Cyclin B3 antibody and store frozen at -20°C or colder. Avoid repeated freeze-thaw cycles.

## Images



### Western Blotting

**Image 1.** Cyclin B3 antibody western blot analysis in HepG2 cell line lysate



Western Blotting

**Image 2.** Cyclin B3 antibody western blot analysis in HepG2 cell line lysate