

Datasheet for ABIN3028591
anti-Cyclin B3 antibody (pSer277)

2 Images

[Go to Product page](#)

Overview

Quantity:	0.4 mL
Target:	Cyclin B3 (CCNB3)
Binding Specificity:	pSer277
Reactivity:	Rat
Host:	Rabbit
Clonality:	Polyclonal
Conjugate:	This Cyclin B3 antibody is un-conjugated
Application:	Dot Blot (DB), ELISA

Product Details

Immunogen:	This phospho-Cyclin B3 antibody was produced from rabbits immunized with a KLH conjugated synthetic phosphopeptide corresponding to amino acid residues surrounding pS277 of rat CCNB3.
Isotype:	Ig Fraction
Purification:	Antigen affinity purified

Target Details

Target:	Cyclin B3 (CCNB3)
Abstract:	CCNB3 Products
Background:	Cyclins are positive regulatory subunits of the cyclin-dependent kinases (CDKs), and thereby play an essential role in the control of the cell cycle, notably via their destruction during cell

Target Details

division. Its tissue specificity suggest that it may be required during early meiotic prophase I (By similarity). [UniProt]

UniProt: [F1LVT0](#)

Pathways: [Cell Division Cycle, Chromatin Binding](#)

Application Details

Application Notes: Titration of the phospho-Cyclin B3 antibody may be required due to differences in protocols and secondary/substrate sensitivity.\. Dot blot: 1:500

Restrictions: For Research Use only

Handling

Format: Liquid

Buffer: In 1X PBS pH 7.4 with 0.09 % sodium azide

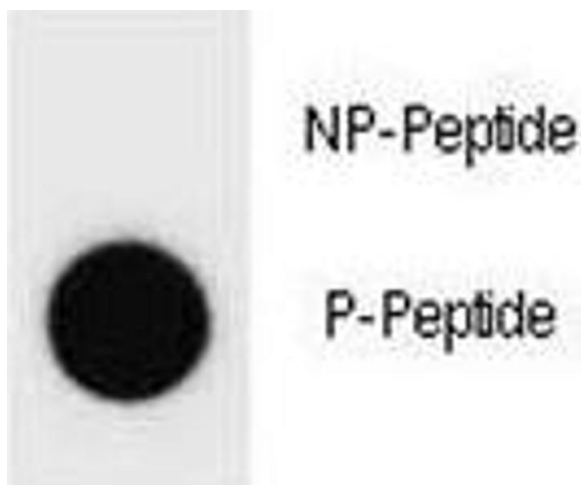
Preservative: Sodium azide

Precaution of Use: This product contains Sodium azide: a POISONOUS AND HAZARDOUS SUBSTANCE which should be handled by trained staff only.

Storage: -20 °C

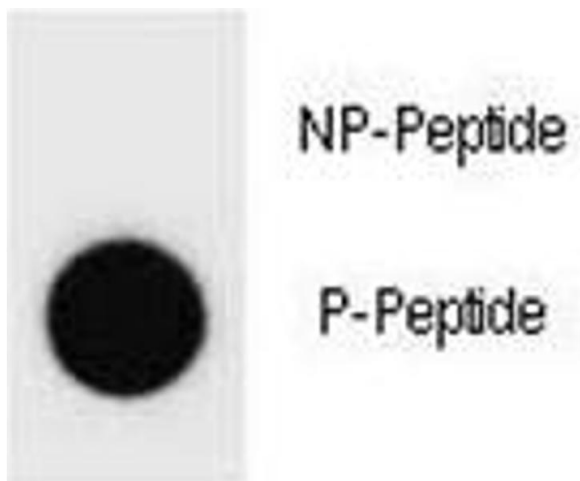
Storage Comment: Aliquot the phospho-Cyclin B3 antibody and store frozen at -20°C or colder. Avoid repeated freeze-thaw cycles.

Images



Dot Blot

Image 1. Dot blot analysis of phospho-Cyclin B3 antibody. 50ng of phos-peptide or nonphos-peptide per dot were spotted.



Dot Blot

Image 2. Dot blot analysis of phospho-Cyclin B3 antibody. 50ng of phos-peptide or nonphos-peptide per dot were spotted.