



[Go to Product page](#)

Datasheet for ABIN3028595
anti-Cyclin C antibody (AA 221-249)

2 Images

Overview

Quantity:	0.4 mL
Target:	Cyclin C (CCNC)
Binding Specificity:	AA 221-249
Reactivity:	Human
Host:	Rabbit
Clonality:	Polyclonal
Conjugate:	This Cyclin C antibody is un-conjugated
Application:	Western Blotting (WB), ELISA

Product Details

Immunogen:	A portion of amino acids 221-249 from the human protein was used as the immunogen for this Cyclin C antibody.
Isotype:	Ig Fraction
Cross-Reactivity (Details):	Expected species reactivity: Mouse, Rat, Bovine, Chicken, Xenopus
Purification:	Purified

Target Details

Target:	Cyclin C (CCNC)
Abstract:	CCNC Products
Background:	CCNC is a member of the cyclin family of proteins. This protein interacts with cyclin-dependent

Target Details

kinase 8 and induces the phosphorylation of the carboxy-terminal domain of the large subunit of RNA polymerase II.

UniProt: [P24863](#)

Pathways: [Cell Division Cycle, Regulation of Lipid Metabolism by PPARalpha](#)

Application Details

Application Notes: Titration of the Cyclin C antibody may be required due to differences in protocols and secondary/substrate sensitivity.\. Western blot: 1:1000

Restrictions: For Research Use only

Handling

Format: Liquid

Buffer: In 1X PBS, pH 7.4, with 0.09 % sodium azide

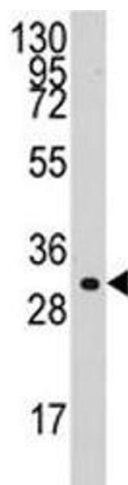
Preservative: Sodium azide

Precaution of Use: This product contains Sodium azide: a POISONOUS AND HAZARDOUS SUBSTANCE which should be handled by trained staff only.

Storage: -20 °C

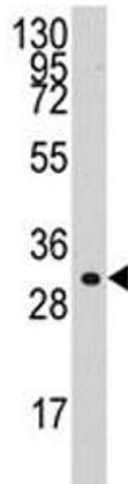
Storage Comment: Aliquot the Cyclin C antibody and store frozen at -20°C or colder. Avoid repeated freeze-thaw cycles.

Images



Western Blotting

Image 1. Western blot analysis of Cyclin C antibody and HL-60 lysate. Predicted molecular weight: 33-37 kDa



Western Blotting

Image 2. Western blot analysis of Cyclin C antibody and HL-60 lysate. Predicted molecular weight: 33-37 kDa