

Datasheet for ABIN3028598  
**anti-CDK1 antibody (AA 1-29)**

5 Images



[Go to Product page](#)

## Overview

Quantity:	0.4 mL
Target:	CDK1
Binding Specificity:	AA 1-29
Reactivity:	Human
Host:	Rabbit
Clonality:	Polyclonal
Conjugate:	This CDK1 antibody is un-conjugated
Application:	Western Blotting (WB), ELISA, Flow Cytometry (FACS)

## Product Details

Immunogen:	A portion of amino acids 1-29 from the human protein was used as the immunogen for this CDC2 antibody.
Isotype:	Ig Fraction
Cross-Reactivity (Details):	Expected species reactivity: Bovine, Chicken
Purification:	Antigen affinity purified

## Target Details

Target:	CDK1
Alternative Name:	CDC2 ( <a href="#">CDK1 Products</a> )
Background:	CDC2 plays a key role in the control of the eukaryotic cell cycle by modulating the centrosome

## Target Details

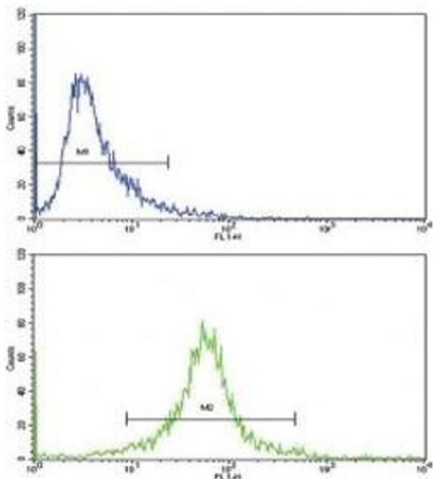
	cycle as well as mitotic onset, promotes G2-M transition, and regulates G1 progress and G1-S transition via association with multiple interphase cyclins. [UniProt]
UniProt:	<a href="#">P06493</a>
Pathways:	<a href="#">Cell Division Cycle</a> , <a href="#">Fc-epsilon Receptor Signaling Pathway</a> , <a href="#">Neurotrophin Signaling Pathway</a> , <a href="#">Activation of Innate immune Response</a> , <a href="#">Mitotic G1-G1/S Phases</a> , <a href="#">DNA Replication</a> , <a href="#">M Phase</a> , <a href="#">Toll-Like Receptors Cascades</a> , <a href="#">Synthesis of DNA</a>

## Application Details

Application Notes:	Titration of the CDC2 antibody may be required due to differences in protocols and secondary/substrate sensitivity.\. Western blot: 1:1000,Flow Cytometry: 1:10-1:50
Restrictions:	For Research Use only

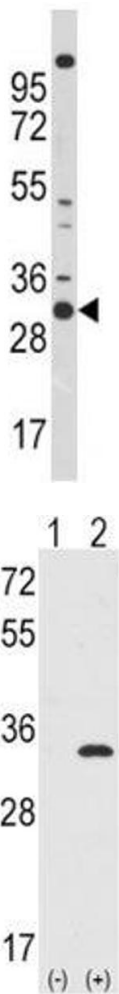
## Handling

Format:	Liquid
Buffer:	In 1X PBS, pH 7.4, with 0.09 % sodium azide
Preservative:	Sodium azide
Precaution of Use:	This product contains Sodium azide: a POISONOUS AND HAZARDOUS SUBSTANCE which should be handled by trained staff only.
Storage:	-20 °C
Storage Comment:	Aliquot the CDC2 antibody and store frozen at -20°C or colder. Avoid repeated freeze-thaw cycles.



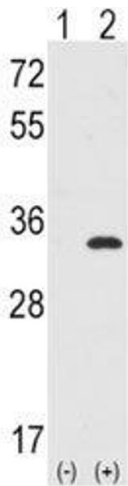
Flow Cytometry

**Image 1.** Flow cytometric analysis of 293 cells using CDC2 antibody (green) compared to a negative control (blue). FITC-conjugated goat-anti-rabbit secondary Ab was used for the analysis.



Western Blotting

**Image 2.** Western blot analysis of CDC2 antibody and 293 lysate



Western Blotting

**Image 3.** Western blot analysis of CDC2 antibody and 293 cell lysate either nontransfected (Lane 1) or transiently transfected with the CDC2 gene (2).

Please check the [product details page](#) for more images. Overall 5 images are available for ABIN3028598.