

Datasheet for ABIN3028603
anti-CDK5 antibody (AA 225-260)



[Go to Product page](#)

3 Images

Overview

Quantity:	0.4 mL
Target:	CDK5
Binding Specificity:	AA 225-260
Reactivity:	Human, Mouse
Host:	Rabbit
Clonality:	Polyclonal
Conjugate:	This CDK5 antibody is un-conjugated
Application:	Western Blotting (WB), ELISA, Flow Cytometry (FACS)

Product Details

Immunogen:	This CDK5 antibody was produced from a rabbit immunized with a KLH conjugated synthetic peptide between 225-260 amino acids from the C-terminal region of human CDK5.
Isotype:	Ig Fraction
Purification:	Antigen affinity purified

Target Details

Target:	CDK5
Alternative Name:	CDK5 (CDK5 Products)
Background:	CDK5 is a proline-directed serine/threonine-protein kinase essential for neuronal cell cycle arrest and differentiation and may be involved in apoptotic cell death in neuronal diseases by triggering abortive cell cycle re-entry. [UniProt]

Target Details

UniProt:	Q00535
Pathways:	Cell Division Cycle, Regulation of Muscle Cell Differentiation, Synaptic Membrane, Regulation of Cell Size, Skeletal Muscle Fiber Development, Synaptic Vesicle Exocytosis

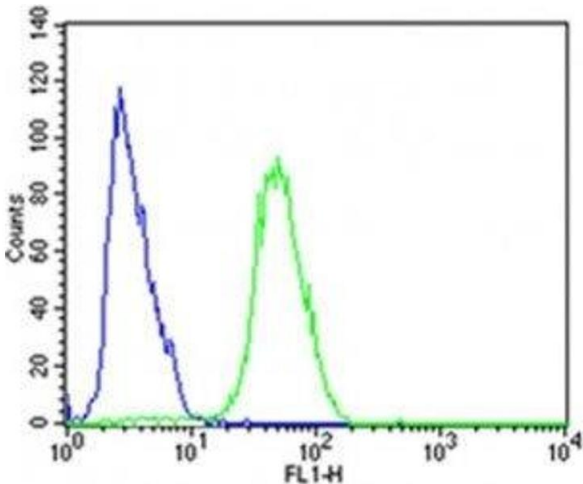
Application Details

Application Notes:	Titration of the CDK5 antibody may be required due to differences in protocols and secondary/substrate sensitivity.\. Flow Cytometry: 1:25,Western blot: 1:1000
Restrictions:	For Research Use only

Handling

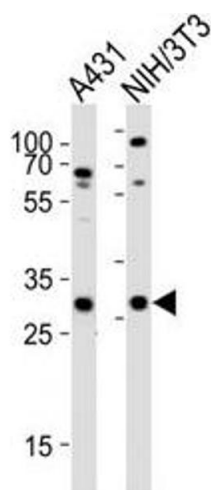
Format:	Liquid
Buffer:	In 1X PBS, pH 7.4, with 0.09 % sodium azide
Preservative:	Sodium azide
Precaution of Use:	This product contains Sodium azide: a POISONOUS AND HAZARDOUS SUBSTANCE which should be handled by trained staff only.
Storage:	-20 °C
Storage Comment:	Aliquot the CDK5 antibody and store frozen at -20°C or colder. Avoid repeated freeze-thaw cycles.

Images



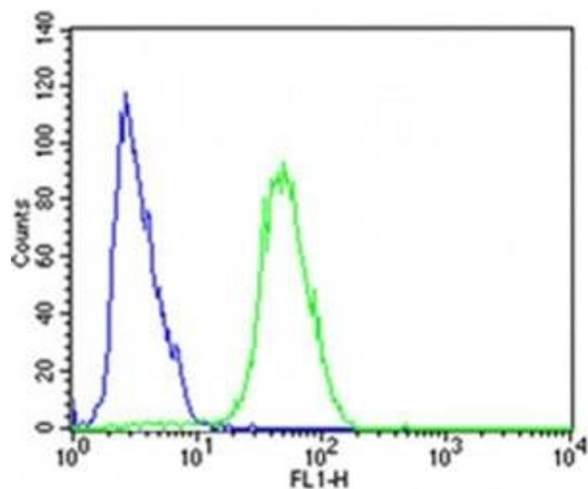
Flow Cytometry

Image 1. Flow cytometric analysis of SH-SY5Y cells using CDK5 antibody (green) compared to an isotype control of rabbit IgG (blue); Ab was diluted at 1:25 dilution. An Alexa Fluor 488 goat anti-rabbit IgG was used



Western Blotting

Image 2. Western blot analysis of lysate from A431, mouse NIH3T3 cell line using CDK5 antibody diluted at 1:1000.



Flow Cytometry

Image 3. Flow cytometric analysis of SH-SY5Y cells using CDK5 antibody (green) compared to an [isotype control of rabbit IgG](#) (blue)