

Datasheet for ABIN3028609
anti-DLL3 antibody (AA 519-548)[Go to Product page](#)

4 Images

Overview

Quantity:	0.2 mL
Target:	DLL3
Binding Specificity:	AA 519-548
Reactivity:	Human
Host:	Rabbit
Clonality:	Polyclonal
Conjugate:	This DLL3 antibody is un-conjugated
Application:	Western Blotting (WB), ELISA, Immunohistochemistry (IHC), Immunofluorescence (IF)

Product Details

Immunogen:	A portion of amino acids 519-548 from the human protein was used as the immunogen for this DLL3 antibody.
Isotype:	Ig Fraction
Purification:	Antigen affinity purified

Target Details

Target:	DLL3
Alternative Name:	DLL3 (DLL3 Products)
Background:	DLL3 inhibits primary neurogenesis. May be required to divert neurons along a specific differentiation pathway. Plays a role in the formation of somite boundaries during segmentation of the paraxial mesoderm (By similarity). [UniProt]

Target Details

UniProt:	Q9NYJ7
Pathways:	Notch Signaling

Application Details

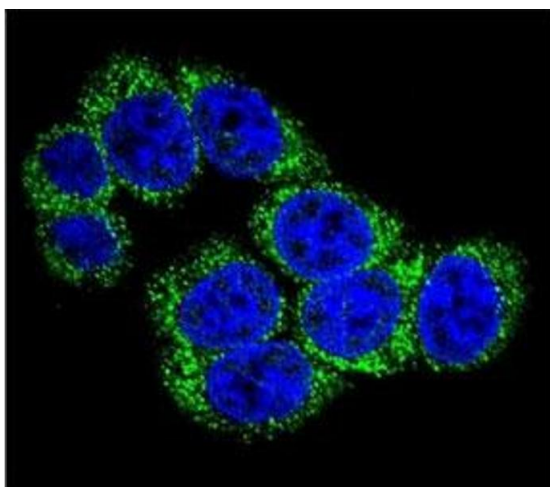
Application Notes:	Titration of the DLL3 antibody may be required due to differences in protocols and secondary/substrate sensitivity.\. Western blot: 1:1000,IHC (Paraffin): 1:50-1:100,Immunofluorescence: 1:10-1:50
--------------------	---

Restrictions:	For Research Use only
---------------	-----------------------

Handling

Format:	Liquid
Buffer:	In 1X PBS, pH 7.4, with 0.09 % sodium azide
Preservative:	Sodium azide
Precaution of Use:	This product contains Sodium azide: a POISONOUS AND HAZARDOUS SUBSTANCE which should be handled by trained staff only.
Storage:	-20 °C
Storage Comment:	Aliquot the DLL3 antibody and store frozen at -20°C or colder. Avoid repeated freeze-thaw cycles.

Images



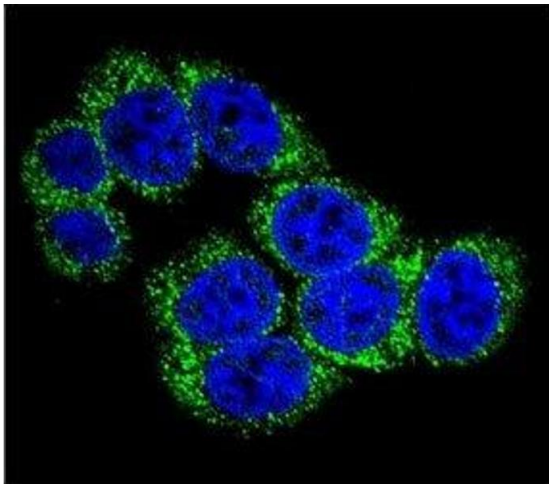
Immunofluorescence

Image 1. Confocal immunofluorescent analysis of DLL3 antibody with 293 cells followed by Alexa Fluor 488-conjugated goat anti-rabbit IgG (green). DAPI was used as a nuclear counterstain (blue).



Western Blotting

Image 2. Western blot analysis of DLL3 antibody and A375 lysate. Predicted molecular weight: ~65 kDa.



Immunofluorescence

Image 3. Confocal immunofluorescent analysis of DLL3 antibody with 293 cells followed by Alexa Fluor 488-conjugated goat anti-rabbit IgG (green). DAPI was used as a nuclear counterstain (blue).

Please check the [product details page](#) for more images. Overall 4 images are available for ABIN3028609.