

Datasheet for ABIN3028611
anti-DLK1 antibody (C-Term)

5 Images

[Go to Product page](#)

Overview

Quantity:	0.4 mL
Target:	DLK1
Binding Specificity:	C-Term
Reactivity:	Human, Mouse
Host:	Rabbit
Clonality:	Polyclonal
Conjugate:	This DLK1 antibody is un-conjugated
Application:	Western Blotting (WB), ELISA, Immunohistochemistry (IHC), Flow Cytometry (FACS)

Product Details

Immunogen:	This DLK1 antibody was produced from a rabbit immunized with a KLH conjugated synthetic peptide between 368-402 amino acids from the C-terminal region of human DLK1.
Isotype:	Ig Fraction
Purification:	Antigen affinity purified

Target Details

Target:	DLK1
Alternative Name:	DLK1 (DLK1 Products)
Background:	May have a role in neuroendocrine differentiation.
UniProt:	P80370

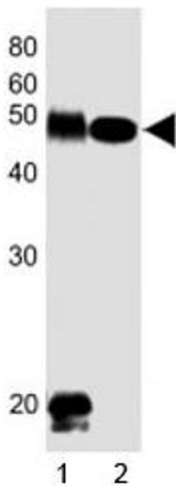
Application Details

Application Notes:	Titration of the DLK1 antibody may be required due to differences in protocols and secondary/substrate sensitivity.\. Western blot: 1:1000,IHC (Paraffin): 1:25,Flow Cytometry: 1:25
Restrictions:	For Research Use only

Handling

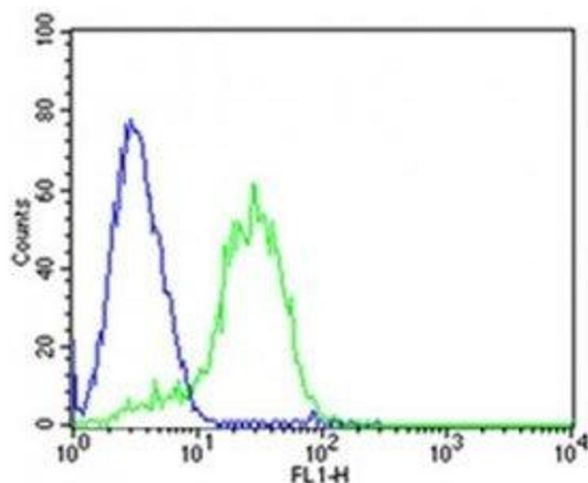
Format:	Liquid
Buffer:	In 1X PBS, pH 7.4, with 0.09 % sodium azide
Preservative:	Sodium azide
Precaution of Use:	This product contains Sodium azide: a POISONOUS AND HAZARDOUS SUBSTANCE which should be handled by trained staff only.
Storage:	-20 °C
Storage Comment:	Aliquot the DLK1 antibody and store frozen at -20°C or colder. Avoid repeated freeze-thaw cycles.

Images



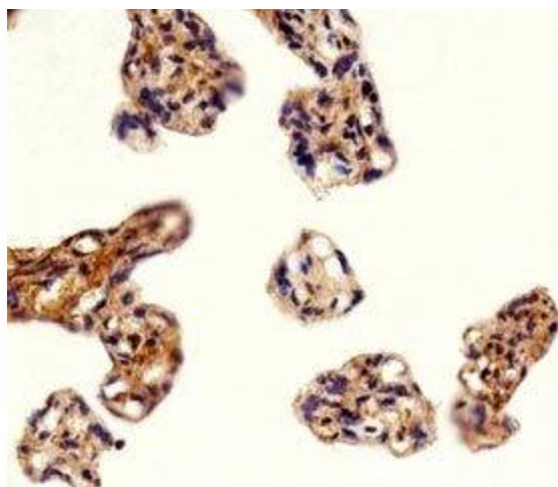
Western Blotting

Image 1. Western blot testing of DLK1 antibody at 1:1000 dilution. Lane 1: human placenta lysate



Flow Cytometry

Image 2. Flow cytometric analysis of HepG2 cells using DLK1 antibody (green) compared to an isotype control (blue). Ab was diluted at 1:25 dilution.



Immunohistochemistry

Image 3. Immunohistochemical analysis of paraffin-embedded human placenta section using DLK1 antibody

Please check the [product details page](#) for more images. Overall 5 images are available for ABIN3028611.