



[Go to Product page](#)

Datasheet for ABIN3028612
anti-DLK2 antibody (AA 353-380)

5 Images

Overview

Quantity:	0.4 mL
Target:	DLK2
Binding Specificity:	AA 353-380
Reactivity:	Human
Host:	Rabbit
Clonality:	Polyclonal
Conjugate:	This DLK2 antibody is un-conjugated
Application:	Western Blotting (WB), ELISA, Flow Cytometry (FACS), Immunohistochemistry (IHC)

Product Details

Immunogen:	A portion of amino acids 353-380 from the human protein was used as the immunogen for this DLK2 antibody.
Isotype:	Ig Fraction
Purification:	Antigen affinity purified

Target Details

Target:	DLK2
Alternative Name:	DLK2 (DLK2 Products)
Background:	DLK2 (Delta like protein 2) affects adipogenesis of 3T3-L1 preadipocytes and mesenchymal C3H10T1/2 cells suggesting a role as a regulator of adipogenesis.

Target Details

UniProt: [Q6UY11](#)

Application Details

Application Notes: Titration of the DLK2 antibody may be required due to differences in protocols and secondary/substrate sensitivity.\. Western blot: 1:1000,IHC (Paraffin): 1:50-1:100,Flow Cytometry: 1:10-1:50

Restrictions: For Research Use only

Handling

Format: Liquid

Buffer: In 1X PBS, pH 7.4, with 0.09 % sodium azide

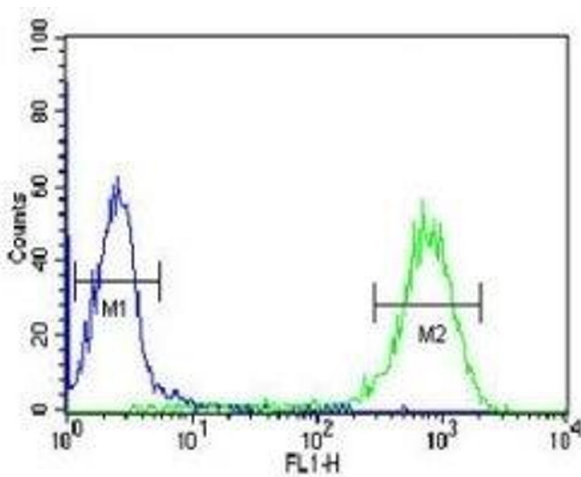
Preservative: Sodium azide

Precaution of Use: This product contains Sodium azide: a POISONOUS AND HAZARDOUS SUBSTANCE which should be handled by trained staff only.

Storage: -20 °C

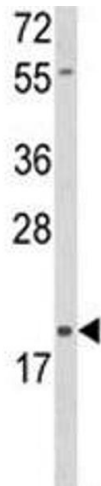
Storage Comment: Aliquot the DLK2 antibody and store frozen at -20°C or colder. Avoid repeated freeze-thaw cycles.

Images



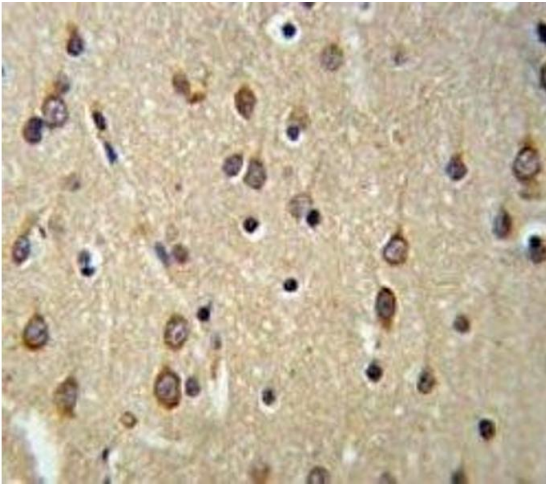
Flow Cytometry

Image 1. DLK2 antibody flow cytometric analysis of HL-60 cells (green) compared to a negative control (blue). FITC-conjugated goat-anti-rabbit secondary Ab was used for the analysis.



Western Blotting

Image 2. Western blot analysis of DLK2 antibody and HL-60 lysate. Predicted molecular weight: 40/21 kDa (isoform 1/2).



Immunohistochemistry

Image 3. DLK2 antibody IHC analysis in formalin fixed and paraffin embedded brain tissue.

Please check the [product details page](#) for more images. Overall 5 images are available for ABIN3028612.