



[Go to Product page](#)

Datasheet for ABIN3028617
anti-DDR2 antibody (AA 816-843)

3 Images

Overview

| | |
|----------------------|--|
| Quantity: | 0.4 mL |
| Target: | DDR2 |
| Binding Specificity: | AA 816-843 |
| Reactivity: | Mouse |
| Host: | Rabbit |
| Clonality: | Polyclonal |
| Conjugate: | This DDR2 antibody is un-conjugated |
| Application: | Western Blotting (WB), ELISA, Immunohistochemistry (IHC) |

Product Details

| | |
|---------------|---|
| Immunogen: | A portion of amino acids 816-843 from the mouse protein was used as the immunogen for this Ddr2 antibody. |
| Isotype: | Ig Fraction |
| Purification: | Antigen affinity purified |

Target Details

| | |
|-------------------|---|
| Target: | DDR2 |
| Alternative Name: | Ddr2 (DDR2 Products) |
| Background: | This tyrosine kinase receptor for fibrillar collagen mediates fibroblast migration and proliferation. Contributes to cutaneous wound healing. |

Target Details

UniProt: [Q62371](#)

Pathways: [RTK Signaling](#)

Application Details

Application Notes: Titration of the Ddr2 antibody may be required due to differences in protocols and secondary/substrate sensitivity.\. Western blot: 1:1000,IHC (Paraffin): 1:10-1:50

Restrictions: For Research Use only

Handling

Format: Liquid

Buffer: In 1X PBS, pH 7.4, with 0.09 % sodium azide

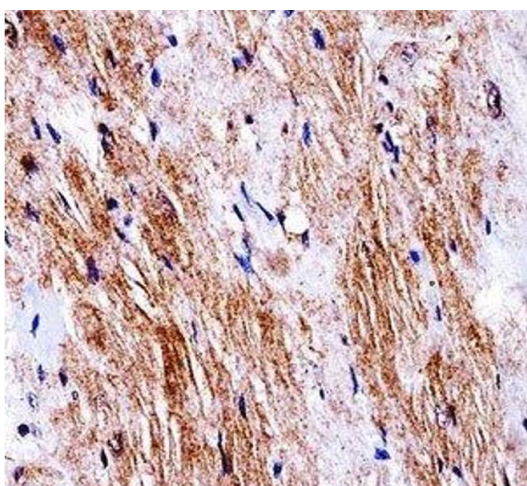
Preservative: Sodium azide

Precaution of Use: This product contains Sodium azide: a POISONOUS AND HAZARDOUS SUBSTANCE which should be handled by trained staff only.

Storage: -20 °C

Storage Comment: Aliquot the Ddr2 antibody and store frozen at -20°C or colder. Avoid repeated freeze-thaw cycles.

Images



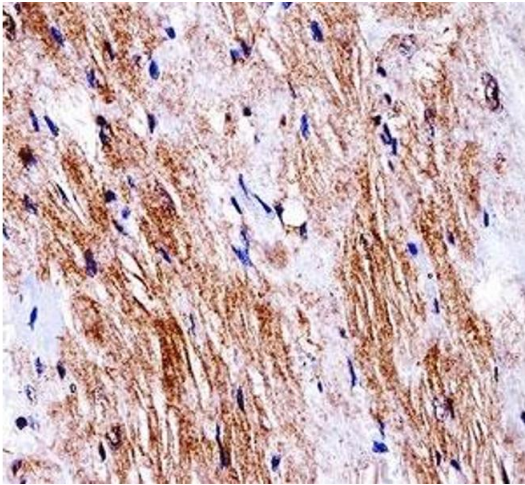
Immunohistochemistry

Image 1. Ddr2 antibody immunohistochemistry analysis in formalin fixed and paraffin embedded mouse heart tissue.



Western Blotting

Image 2. Ddr2 antibody western blot analysis in mouse bladder tissue lysate. Predicted molecular weight: 97-116 kDa.



Immunohistochemistry

Image 3. Ddr2 antibody immunohistochemistry analysis in formalin fixed and paraffin embedded mouse heart tissue.