

Datasheet for ABIN3028625  
**anti-DUSP15 antibody (AA 17-44)**[Go to Product page](#)

## 3 Images

## Overview

Quantity:	0.4 mL
Target:	DUSP15
Binding Specificity:	AA 17-44
Reactivity:	Human
Host:	Rabbit
Clonality:	Polyclonal
Conjugate:	This DUSP15 antibody is un-conjugated
Application:	ELISA, Western Blotting (WB), Immunohistochemistry (IHC)

## Product Details

Immunogen:	A portion of amino acids 17-44 from the human protein was used as the immunogen for this DUSP15 antibody.
Isotype:	Ig Fraction
Cross-Reactivity (Details):	Expected species reactivity: Mouse
Purification:	Purified

## Target Details

Target:	DUSP15
Alternative Name:	DUSP15 ( <a href="#">DUSP15 Products</a> )
Background:	DUSP15 belongs to the non-receptor class of the protein-tyrosine phosphatase family. This

## Target Details

protein has both protein-tyrosine phosphatase activity and serine/threonine-specific phosphatase activity, and therefore is known as a dual specificity phosphatase.

UniProt: [Q9H1R2](#)

## Application Details

Application Notes: Titration of the DUSP15 antibody may be required due to differences in protocols and secondary/substrate sensitivity.\. Western blot: 1:1000,IHC (Paraffin): 1:50-1:100

Restrictions: For Research Use only

## Handling

Format: Liquid

Buffer: In 1X PBS pH 7.4 with 0.09 % sodium azide

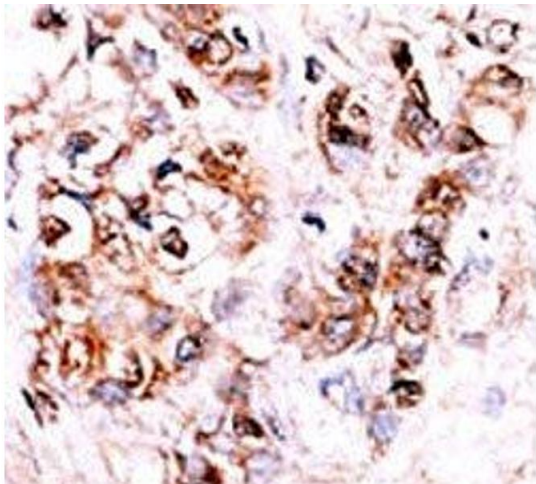
Preservative: Sodium azide

Precaution of Use: This product contains Sodium azide: a POISONOUS AND HAZARDOUS SUBSTANCE which should be handled by trained staff only.

Storage: -20 °C

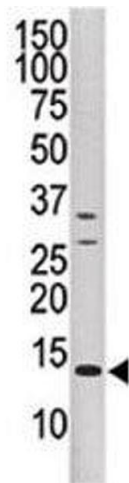
Storage Comment: Aliquot the DUSP15 antibody and store frozen at -20°C or colder. Avoid repeated freeze-thaw cycles.

## Images



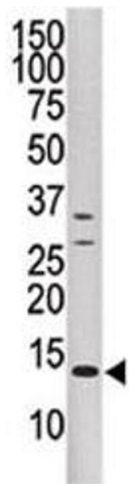
### Immunohistochemistry

**Image 1.** IHC analysis of FFPE human hepatocarcinoma stained with the DUSP15 antibody



**Western Blotting**

**Image 2.** Western blot analysis of DUSP15 antibody and CEM cell line lysate.



**Western Blotting**

**Image 3.** Western blot analysis of DUSP15 antibody and CEM cell line lysate.