

Datasheet for ABIN3028626
anti-DUSP6 antibody (AA 58-89)



[Go to Product page](#)

3 Images

Overview

Quantity:	0.4 mL
Target:	DUSP6
Binding Specificity:	AA 58-89
Reactivity:	Human
Host:	Rabbit
Clonality:	Polyclonal
Conjugate:	This DUSP6 antibody is un-conjugated
Application:	Western Blotting (WB), ELISA, Immunofluorescence (IF)

Product Details

Immunogen:	A portion of amino acids 58-89 from the human protein was used as the immunogen for this DUSP6 antibody.
Isotype:	Ig Fraction
Cross-Reactivity (Details):	Expected species reactivity: Bovine
Purification:	Purified

Target Details

Target:	DUSP6
Alternative Name:	DUSP6 (DUSP6 Products)
Background:	DUSP6 inactivates MAP kinases. Has a specificity for the ERK family. [UniProt]

Target Details

UniProt:	Q16828
Pathways:	Neurotrophin Signaling Pathway , Activation of Innate immune Response , Toll-Like Receptors Cascades

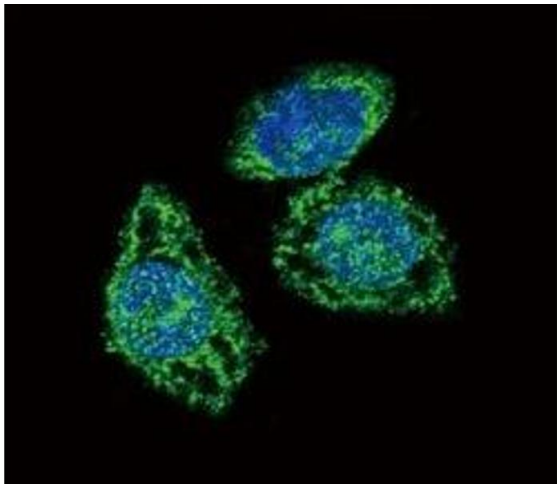
Application Details

Application Notes:	Titration of the DUSP6 antibody may be required due to differences in protocols and secondary/substrate sensitivity.\. Immunofluorescence: 1:10-1:50,Western blot: 1:1000
Restrictions:	For Research Use only

Handling

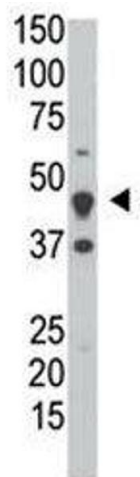
Format:	Liquid
Buffer:	In 1X PBS, pH 7.4, with 0.09 % sodium azide
Preservative:	Sodium azide
Precaution of Use:	This product contains Sodium azide: a POISONOUS AND HAZARDOUS SUBSTANCE which should be handled by trained staff only.
Storage:	-20 °C
Storage Comment:	Aliquot the DUSP6 antibody and store frozen at -20°C or colder. Avoid repeated freeze-thaw cycles.

Images



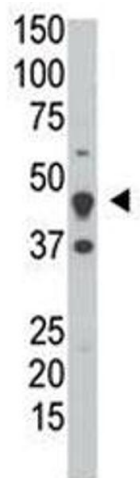
Immunofluorescence

Image 1. Confocal immunofluorescent analysis of DUSP6 antibody with HeLa cells followed by Alexa Fluor 488-conjugated goat anti-rabbit IgG (green). DAPI was used as a nuclear counterstain (blue).



Western Blotting

Image 2. The DUSP6 antibody used in western blot to detect DUSP6 in HeLa cell lysate; Predicted molecular weight 42/26 kDa (isoform 1/2).



Western Blotting

Image 3. The DUSP6 antibody used in western blot to detect DUSP6 in HeLa cell lysate