

Datasheet for ABIN3028632
anti-EGR1 antibody (AA 9-37)[Go to Product page](#)

7 Images

Overview

Quantity:	0.4 mL
Target:	EGR1
Binding Specificity:	AA 9-37
Reactivity:	Human, Mouse
Host:	Rabbit
Clonality:	Polyclonal
Conjugate:	This EGR1 antibody is un-conjugated
Application:	Western Blotting (WB), ELISA, Immunofluorescence (IF), Flow Cytometry (FACS)

Product Details

Immunogen:	A portion of amino acids 9-37 from the human protein was used as the immunogen for this EGR1 antibody.
Isotype:	Ig Fraction
Cross-Reactivity (Details):	Expected species reactivity: Bovine, Xenopus
Purification:	Purified

Target Details

Target:	EGR1
Alternative Name:	EGR1 (EGR1 Products)
Background:	EGR1 belongs to the EGR family of C2H2-type zinc-finger proteins. It is a nuclear protein and

Target Details

functions as a transcriptional regulator. The products of target genes it activates are required for differentiation and mitogenesis.

UniProt: [P18146](#)

Pathways: [Regulation of Carbohydrate Metabolic Process](#), [Regulation of long-term Neuronal Synaptic Plasticity](#)

Application Details

Application Notes: Titration of the EGR1 antibody may be required due to differences in protocols and secondary/substrate sensitivity.\. Western blot: 1:1000,Flow Cytometry: 1:10-1:50,Immunofluorescence: 1:10-1:50

Restrictions: For Research Use only

Handling

Format: Liquid

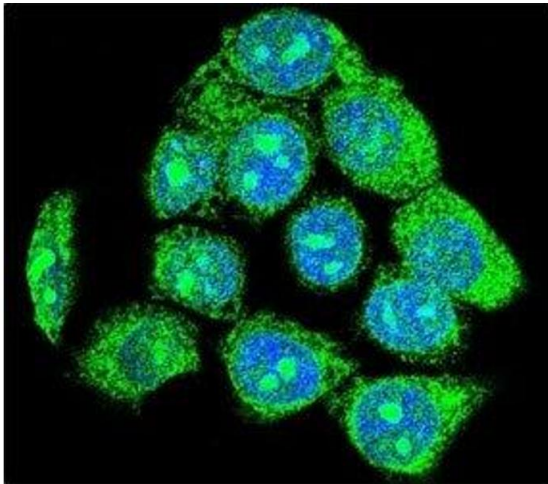
Buffer: In 1X PBS, pH 7.4, with 0.09 % sodium azide

Preservative: Sodium azide

Precaution of Use: This product contains Sodium azide: a POISONOUS AND HAZARDOUS SUBSTANCE which should be handled by trained staff only.

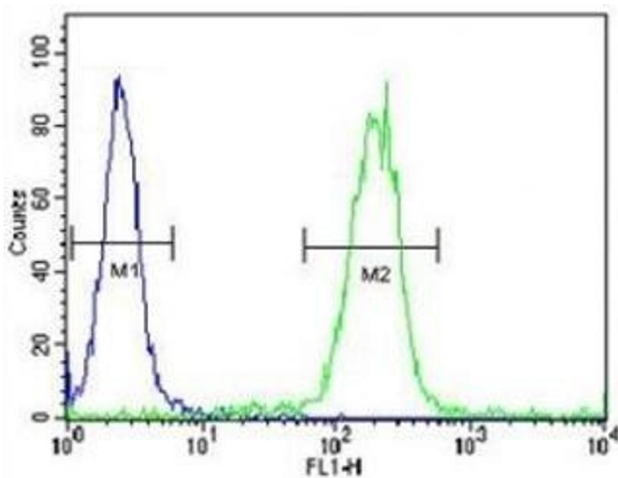
Storage: -20 °C

Storage Comment: Aliquot the EGR1 antibody and store frozen at -20°C or colder. Avoid repeated freeze-thaw cycles.



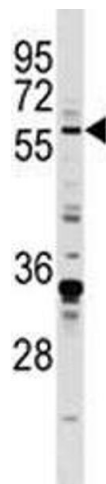
Immunofluorescence

Image 1. Confocal immunofluorescent analysis of EGR1 antibody with HeLa cells followed by Alexa Fluor 488-conjugated goat anti-rabbit IgG (green). DAPI was used as a nuclear counterstain (blue).



Flow Cytometry

Image 2. EGR1 antibody flow cytometric analysis of WiDr cells (right histogram) compared to a negative control (left histogram). FITC-conjugated goat-anti-rabbit secondary Ab was used for the analysis.



Western Blotting

Image 3. EGR1 antibody western blot analysis in MDA-MB231 lysate. Predicted molecular weight ~58 kDa.

Please check the [product details page](#) for more images. Overall 7 images are available for ABIN3028632.