

Datasheet for ABIN3028636

anti-EZH2 antibody

12 Images

[Go to Product page](#)

Overview

| | |
|--------------|--|
| Quantity: | 0.4 mL |
| Target: | EZH2 |
| Reactivity: | Human, Mouse |
| Host: | Rabbit |
| Clonality: | Polyclonal |
| Conjugate: | This EZH2 antibody is un-conjugated |
| Application: | Western Blotting (WB), ELISA, Immunohistochemistry (IHC), Immunofluorescence (IF), Flow Cytometry (FACS) |

Product Details

| | |
|---------------|--|
| Immunogen: | This EZH2 antibody was produced from rabbits immunized with a recombinant protein from human EZH2. |
| Isotype: | Ig Fraction |
| Purification: | Antigen affinity purified |

Target Details

| | |
|-------------------|--|
| Target: | EZH2 |
| Alternative Name: | EZH2 (EZH2 Products) |
| Background: | EZH2 is a protein that transfers sulfate to the C-4 hydroxyl of beta-1,4-linked GalNAc flanked by GlcUA residues in chondroitin. |
| UniProt: | Q15910 |

Target Details

Pathways: [Retinoic Acid Receptor Signaling Pathway](#), [Regulation of Muscle Cell Differentiation](#)

Application Details

Application Notes: Titration of the EZH2 antibody may be required due to differences in protocols and secondary/substrate sensitivity.\. Flow Cytometry: 1:25,Western blot: 1:1000,IHC (FFPE): 1:10-1:50,IF/ICC: 1:25

Restrictions: For Research Use only

Handling

Format: Liquid

Buffer: In 1X PBS pH 7.4 with 0.09 % sodium azide

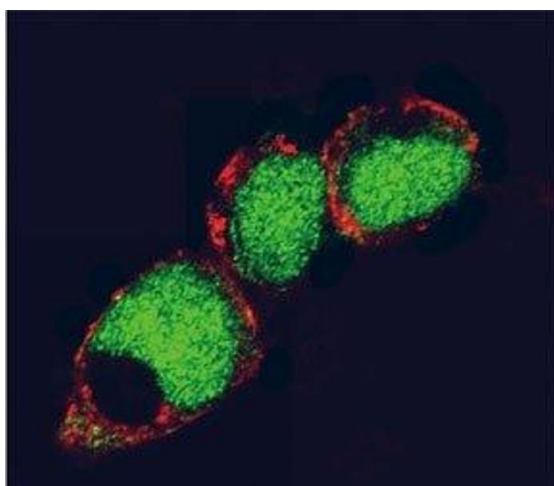
Preservative: Sodium azide

Precaution of Use: This product contains Sodium azide: a POISONOUS AND HAZARDOUS SUBSTANCE which should be handled by trained staff only.

Storage: -20 °C

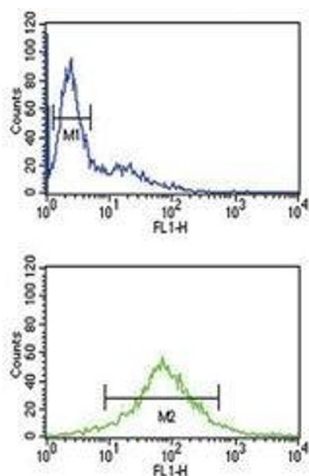
Storage Comment: Aliquot the EZH2 antibody and store frozen at -20°C or colder. Avoid repeated freeze-thaw cycles.

Images



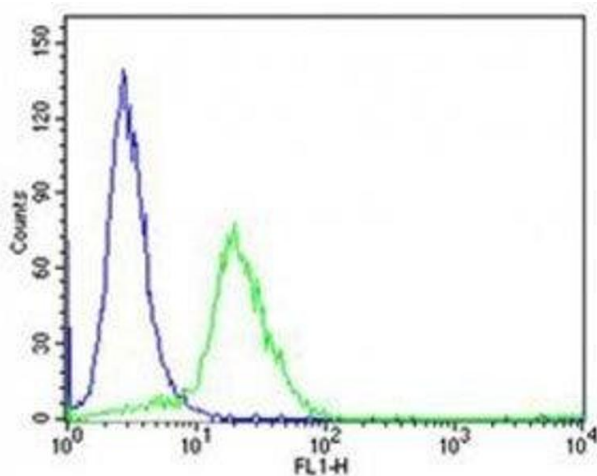
Immunofluorescence

Image 1. Confocal immunofluorescent analysis of EZH2 antibody and 293 cells followed by Alexa Fluor 488-conjugated goat anti-rabbit IgG (green). Actin filaments have been labeled with Alexa Fluor 555 phalloidin (red).



Flow Cytometry

Image 2. EZH2 antibody flow cytometric analysis of Jurkat cells (bottom histogram) compared to negative control cells (top histogram).



Flow Cytometry

Image 3. Flow cytometric analysis of HeLa cells using EZHZ2 antibody (green) compared to an isotype control of rabbit IgG (blue). Ab was diluted at 1:25 dilution. An Alexa Fluor 488 goat anti-rabbit IgG was used as the

Please check the [product details page](#) for more images. Overall 12 images are available for ABIN3028636.