



[Go to Product page](#)

Datasheet for ABIN3028641
anti-GCN2 antibody (AA 1-30)

3 Images

Overview

Quantity:	0.4 mL
Target:	GCN2 (EIF2AK4)
Binding Specificity:	AA 1-30
Reactivity:	Human
Host:	Rabbit
Clonality:	Polyclonal
Conjugate:	This GCN2 antibody is un-conjugated
Application:	Immunohistochemistry (IHC), Western Blotting (WB), ELISA

Product Details

Immunogen:	A portion of amino acids 1-30 from the human protein was used as the immunogen for this GCN2 antibody.
Isotype:	Ig Fraction
Purification:	Purified

Target Details

Target:	GCN2 (EIF2AK4)
Alternative Name:	GCN2 (EIF2AK4 Products)
Background:	GCN2 (EIF2AK4) belongs to a family of kinases that phosphorylate the alpha subunit of eukaryotic translation initiation factor-2 to downregulate protein synthesis in response to varied cellular stresses.

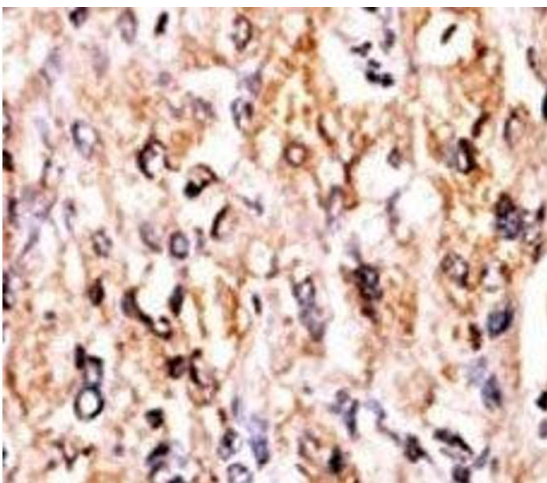
Target Details

UniProt:	Q9P2K8
Pathways:	ER-Nucleus Signaling, Hepatitis C

Application Details

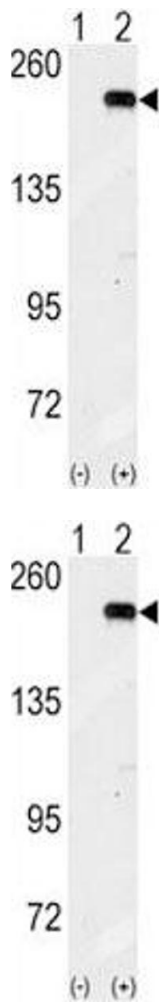
Application Notes:	Titration of the GCN2 antibody may be required due to differences in protocols and secondary/substrate sensitivity.\. Western blot: 1:1000,IHC (Paraffin): 1:50-1:100
Restrictions:	For Research Use only
Handling	
Format:	Liquid
Buffer:	In 1X PBS, pH 7.4, with 0.09 % sodium azide
Preservative:	Sodium azide
Precaution of Use:	This product contains Sodium azide: a POISONOUS AND HAZARDOUS SUBSTANCE which should be handled by trained staff only.
Storage:	-20 °C
Storage Comment:	Aliquot the GCN2 antibody and store frozen at -20°C or colder. Avoid repeated freeze-thaw cycles.

Images



Immunohistochemistry

Image 1. IHC analysis of FFPE human hepatocarcinoma tissue stained with the GCN2 antibody



Western Blotting

Image 2. Western blot analysis of GCN2 antibody and 293 cell lysate (2 ug/lane) either nontransfected (Lane 1) or transiently transfected with the GCN2 gene (2).

Western Blotting

Image 3. Western blot analysis of GCN2 antibody and 293 cell lysate (2 ug/lane) either nontransfected (Lane 1) or transiently transfected with the GCN2 gene (2).