



[Go to Product page](#)

Datasheet for ABIN3028668

anti-G Antigen 12F antibody (AA 1-30)

2 Images

Overview

Quantity:	0.4 mL
Target:	G Antigen 12F (GAGE12F)
Binding Specificity:	AA 1-30
Reactivity:	Human
Host:	Rabbit
Clonality:	Polyclonal
Conjugate:	This G Antigen 12F antibody is un-conjugated
Application:	ELISA, Western Blotting (WB)

Product Details

Immunogen:	A portion of amino acids 1-30 from the human protein was used as the immunogen for this GAGE12F antibody.
Isotype:	Ig Fraction
Purification:	Antigen affinity purified

Target Details

Target:	G Antigen 12F (GAGE12F)
Alternative Name:	GAGE12F (GAGE12F Products)
Background:	The function of this protein remains unknown.
UniProt:	P0CL80

Application Details

Application Notes: Titration of the GAGE12F antibody may be required due to differences in protocols and secondary/substrate sensitivity.\. Western blot: 1:1000

Restrictions: For Research Use only

Handling

Format: Liquid

Buffer: In 1X PBS pH 7.4 with 0.09 % sodium azide

Preservative: Sodium azide

Precaution of Use: This product contains Sodium azide: a POISONOUS AND HAZARDOUS SUBSTANCE which should be handled by trained staff only.

Storage: -20 °C

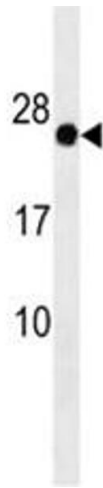
Storage Comment: Aliquot the GAGE12F antibody and store frozen at -20°C or colder. Avoid repeated freeze-thaw cycles.

Images



Western Blotting

Image 1. GAGE12F antibody western blot analysis in HepG2 lysate



Western Blotting

Image 2. GAGE12F antibody western blot analysis in HepG2 lysate