

Datasheet for ABIN3028675
anti-GATA6 antibody (C-Term)



[Go to Product page](#)

2 Images

Overview

Quantity:	0.4 mL
Target:	GATA6
Binding Specificity:	AA 544-577, C-Term
Reactivity:	Mouse, Rat
Host:	Rabbit
Clonality:	Polyclonal
Conjugate:	This GATA6 antibody is un-conjugated
Application:	ELISA, Western Blotting (WB)

Product Details

Immunogen:	This mouse Gata6 antibody was produced from a rabbit immunized with a KLH conjugated synthetic peptide between 544-577 amino acids from the C-terminal region of mouse Gata6.
Isotype:	Ig Fraction
Purification:	Antigen affinity purified

Target Details

Target:	GATA6
Alternative Name:	Gata6 (GATA6 Products)
Background:	Transcriptional activator that regulates SEMA3C and PLXNA2. Involved in gene regulation specifically in the gastric epithelium (By similarity).

Target Details

UniProt: Q61169

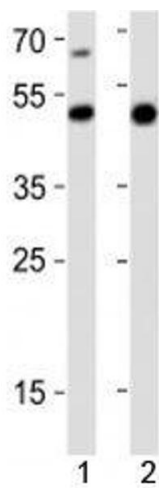
Application Details

Application Notes:	Titration of the Gata6 antibody may be required due to differences in protocols and secondary/substrate sensitivity.\. Western blot: 1:1000
Restrictions:	For Research Use only

Handling

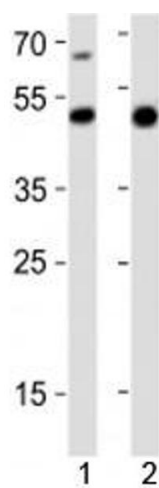
Format:	Liquid
Buffer:	In 1X PBS, pH 7.4, with 0.09 % sodium azide
Preservative:	Sodium azide
Precaution of Use:	This product contains Sodium azide: a POISONOUS AND HAZARDOUS SUBSTANCE which should be handled by trained staff only.
Storage:	-20 °C
Storage Comment:	Aliquot the Gata6 antibody and store frozen at -20°C or colder. Avoid repeated freeze-thaw cycles.

Images



Western Blotting

Image 1. Western blot analysis of lysate from 1) mouse heart and 2) rat stomach tissue lysate using Gata6 antibody at 1:1000. Predicted molecular weight: 60, 45 kDa (isoforms 1, 2).



Western Blotting

Image 2. Western blot analysis of lysate from 1) mouse heart and 2) rat stomach tissue lysate using Gata6 antibody at 1:1000. Predicted molecular weight: 60, 45 kDa (isoforms 1, 2).