

Datasheet for ABIN3028692

anti-HES5 antibody**2** Images[Go to Product page](#)

Overview

Quantity:	0.4 mL
Target:	HES5
Reactivity:	Human, Mouse
Host:	Rabbit
Clonality:	Polyclonal
Conjugate:	This HES5 antibody is un-conjugated
Application:	Western Blotting (WB), ELISA

Product Details

Immunogen:	This HES5 antibody was produced from a rabbit immunized with a KLH conjugated synthetic peptide between 81-115 amino acids from the Central region of human HES5.
Isotype:	Ig Fraction
Cross-Reactivity (Details):	Expected species reactivity: Rat
Purification:	Antigen affinity purified

Target Details

Target:	HES5
Alternative Name:	HES5 (HES5 Products)
Background:	Transcriptional repressor of genes that require a bHLH protein for their transcription. Plays an important role as neurogenesis negative regulator (By similarity).

Target Details

UniProt:	Q5TA89
Pathways:	Stem Cell Maintenance, Tube Formation

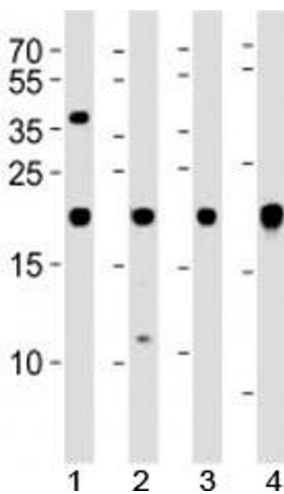
Application Details

Application Notes:	Titration of the HES5 antibody may be required due to differences in protocols and secondary/substrate sensitivity.\. Western blot: 1:1000
Restrictions:	For Research Use only

Handling

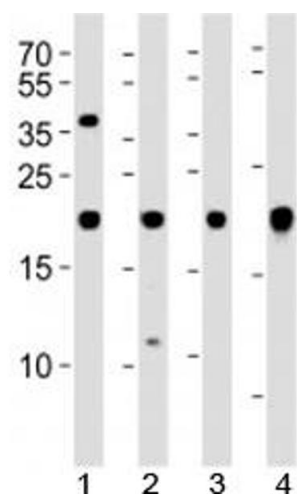
Format:	Liquid
Buffer:	In 1X PBS, pH 7.4, with 0.09 % sodium azide
Preservative:	Sodium azide
Precaution of Use:	This product contains Sodium azide: a POISONOUS AND HAZARDOUS SUBSTANCE which should be handled by trained staff only.
Storage:	-20 °C
Storage Comment:	Aliquot the HES5 antibody and store frozen at -20°C or colder. Avoid repeated freeze-thaw cycles.

Images



Western Blotting

Image 1. Western blot analysis of lysate from 1) U-87 MG, 2) SK-N-MC cell line, 3) human heart and 4) mouse heart tissue using HES5 antibody at 1:1000. Predicted molecular weight ~18 kDa.



Western Blotting

Image 2. Western blot analysis of lysate from 1) U-87 MG, 2) SK-N-MC cell line, 3) human heart and 4) mouse heart tissue using HES5 antibody at 1:1000. Predicted molecular weight ~18 kDa.