

Datasheet for ABIN3028693
anti-HES6 antibody (AA 6-34)[Go to Product page](#)

2 Images

Overview

Quantity:	0.4 mL
Target:	HES6
Binding Specificity:	AA 6-34
Reactivity:	Human
Host:	Rabbit
Clonality:	Polyclonal
Conjugate:	This HES6 antibody is un-conjugated
Application:	Western Blotting (WB), ELISA

Product Details

Immunogen:	A portion of amino acids 6-34 from the human protein was used as the immunogen for this HES6 antibody.
Isotype:	Ig Fraction
Purification:	Antigen affinity purified

Target Details

Target:	HES6
Alternative Name:	HES6 (HES6 Products)
Background:	HES6 is a member of a subfamily of basic helix-loop-helix transcription repressors that have homology to the Drosophila enhancer of split genes. The protein functions as a cofactor, interacting with other transcription factors through a tetrapeptide domain in its C-terminus.

Target Details

UniProt: [Q96HZ4](#)

Application Details

Application Notes: Titration of the HES6 antibody may be required due to differences in protocols and secondary/substrate sensitivity.\. Western blot: 1:1000

Restrictions: For Research Use only

Handling

Format: Liquid

Buffer: In 1X PBS, pH 7.4, with 0.09 % sodium azide

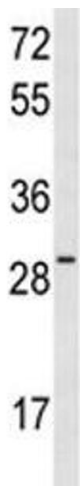
Preservative: Sodium azide

Precaution of Use: This product contains Sodium azide: a POISONOUS AND HAZARDOUS SUBSTANCE which should be handled by trained staff only.

Storage: -20 °C

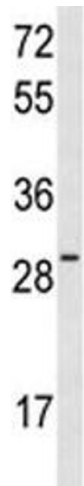
Storage Comment: Aliquot the HES6 antibody and store frozen at -20°C or colder. Avoid repeated freeze-thaw cycles.

Images



Western Blotting

Image 1. Western blot analysis of HES6 antibody and MCF-7 lysate.



Western Blotting

Image 2. Western blot analysis of HES6 antibody and MCF-7 lysate.