

Datasheet for ABIN3028701  
**anti-HES1 antibody (AA 9-38)**

## 5 Images

[Go to Product page](#)

## Overview

Quantity:	0.4 mL
Target:	HES1
Binding Specificity:	AA 9-38
Reactivity:	Human
Host:	Rabbit
Clonality:	Polyclonal
Conjugate:	This HES1 antibody is un-conjugated
Application:	Western Blotting (WB), ELISA, Flow Cytometry (FACS), Immunofluorescence (IF)

## Product Details

Immunogen:	A portion of amino acids 9-38 from the human protein was used as the immunogen for this HES1 antibody.
Isotype:	Ig Fraction
Cross-Reactivity (Details):	Expected species reactivity: Mouse, Rat, Bovine, Xenopus
Purification:	Purified

## Target Details

Target:	HES1
Alternative Name:	HES1 ( <a href="#">HES1 Products</a> )
Background:	HES1 belongs to the basic helix-loop-helix family of transcription factors. It is a transcriptional

## Target Details

repressor of genes that require a bHLH protein for their transcription. HES1 has a particular type of basic domain that contains a helix interrupting protein that binds to the N-box rather than the canonical E-box.

UniProt: [Q14469](#)

Pathways: [DNA Damage Repair](#)

## Application Details

Application Notes: Titration of the HES1 antibody may be required due to differences in protocols and secondary/substrate sensitivity.\. Western blot: 1:1000,Immunofluorescence: 1:10-1:50,Flow Cytometry: 1:10-1:50

Restrictions: For Research Use only

## Handling

Format: Liquid

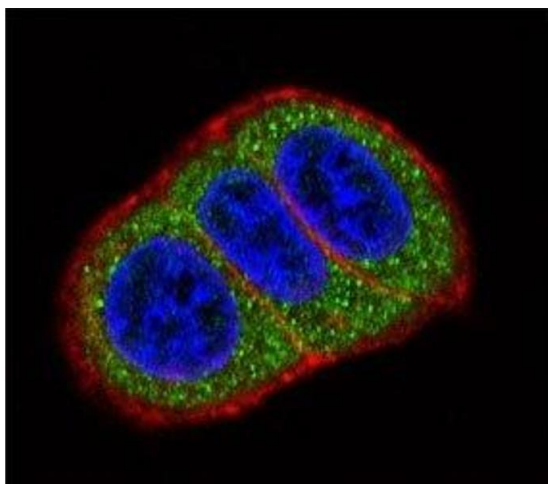
Buffer: In 1X PBS, pH 7.4, with 0.09 % sodium azide

Preservative: Sodium azide

Precaution of Use: This product contains Sodium azide: a POISONOUS AND HAZARDOUS SUBSTANCE which should be handled by trained staff only.

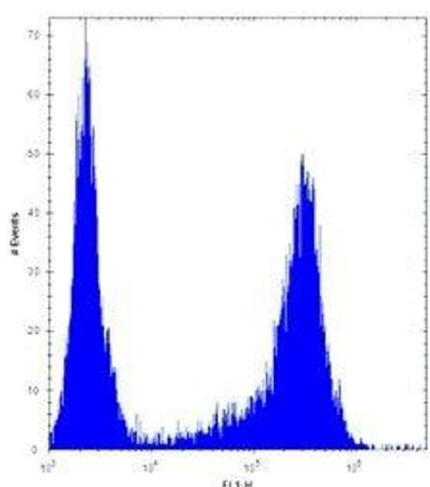
Storage: -20 °C

Storage Comment: Aliquot the HES1 antibody and store frozen at -20°C or colder. Avoid repeated freeze-thaw cycles.



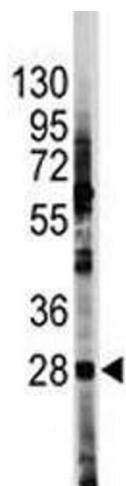
### Immunofluorescence

**Image 1.** Confocal immunofluorescent analysis of HES1 antibody with HeLa cells followed by Alexa Fluor 488-conjugated goat anti-rabbit IgG (green). Actin filaments have been labeled with Alexa Fluor 555 Phalloidin (red). DAPI was used as a nuclear counterstain (blue).



### Flow Cytometry

**Image 2.** HES1 antibody flow cytometric analysis of U251 cells (right histogram) compared to a negative control (left histogram). FITC-conjugated goat-anti-rabbit secondary Ab was used for the analysis.



### Western Blotting

**Image 3.** Western blot analysis of HES1 antibody and HL-60 lysate. Predicted molecular weight: 30-35 kDa.

Please check the [product details page](#) for more images. Overall 5 images are available for ABIN3028701.