



[Go to Product page](#)

Datasheet for ABIN3028702  
**anti-HMGA2 antibody (C-Term)**

3 Images

Overview

Quantity:	0.4 mL
Target:	HMGA2
Binding Specificity:	C-Term
Reactivity:	Human, Mouse
Host:	Rabbit
Clonality:	Polyclonal
Conjugate:	This HMGA2 antibody is un-conjugated
Application:	Western Blotting (WB), ELISA, Immunofluorescence (IF)

Product Details

Immunogen:	This Hmga2 antibody was produced from a rabbit immunized with a KLH conjugated synthetic peptide between 72-105 amino acids from the C-terminal region of mouse Hmga2.
Isotype:	Ig Fraction
Purification:	Antigen affinity purified

Target Details

Target:	HMGA2
Alternative Name:	Hmga2 ( <a href="#">HMGA2 Products</a> )
Background:	Functions as a transcriptional regulator. Functions in cell cycle regulation through CCNA2. Plays an important role in chromosome condensation during the meiotic G2/M transition of spermatocytes.

## Target Details

UniProt: [P52927](#)

Pathways: [Positive Regulation of Response to DNA Damage Stimulus](#)

## Application Details

Application Notes: Titration of the Hmga2 antibody may be required due to differences in protocols and secondary/substrate sensitivity.\. Immunofluorescence: 1:25,Western blot: 1:1000

Restrictions: For Research Use only

## Handling

Format: Liquid

Buffer: In 1X PBS, pH 7.4, with 0.09 % sodium azide

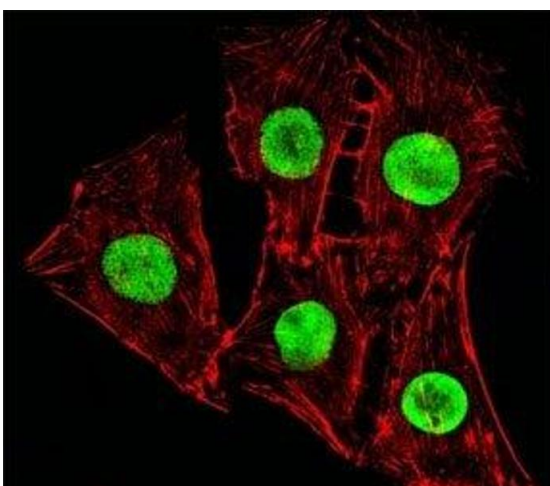
Preservative: Sodium azide

Precaution of Use: This product contains Sodium azide: a POISONOUS AND HAZARDOUS SUBSTANCE which should be handled by trained staff only.

Storage: -20 °C

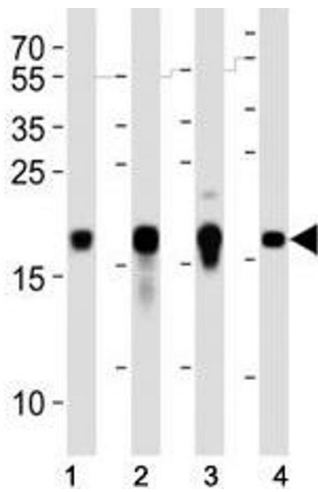
Storage Comment: Aliquot the Hmga2 antibody and store frozen at -20°C or colder. Avoid repeated freeze-thaw cycles.

## Images



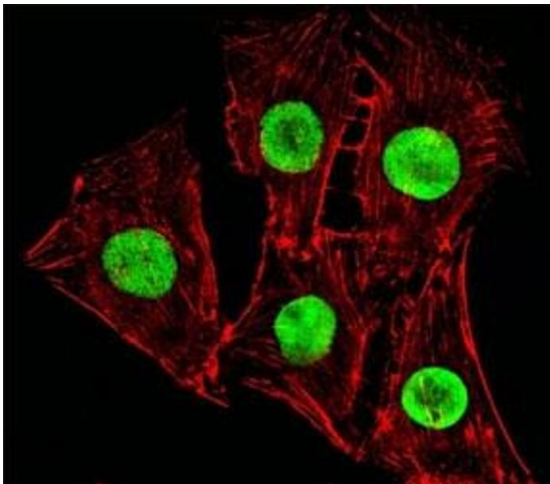
### Immunofluorescence

**Image 1.** Fluorescent image of C2C12 cells stained with Hmga2 antibody at 1:25 dilution. An Alexa Fluor 488-conjugated goat anti-rabbit IgG was used as the secondary Ab (green). Cytoplasmic actin was counterstained with Alexa Fluor 555 conjugated with Phalloidin (re



### Western Blotting

**Image 2.** Western blot analysis of lysate from human (2) HepG2, (2) NCCIT and mouse (3) NIH3T3, (4) F9 cell lines using Hmga2 antibody at 1:1000.



### Immunofluorescence

**Image 3.** Fluorescent image of C2C12 cells stained with Hmga2 antibody at 1:25 dilution. An Alexa Fluor 488-conjugated goat anti-rabbit IgG was used as the secondary Ab (green). Cytoplasmic actin was counterstained with Alexa Fluor 555 conjugated with Phalloidin (red).