

Datasheet for ABIN3028719  
**anti-HNF1A antibody (AA 177-205)**[Go to Product page](#)

## 3 Images

## Overview

Quantity:	0.4 mL
Target:	HNF1A
Binding Specificity:	AA 177-205
Reactivity:	Human, Mouse
Host:	Rabbit
Clonality:	Polyclonal
Conjugate:	This HNF1A antibody is un-conjugated
Application:	Western Blotting (WB), ELISA, Immunofluorescence (IF)

## Product Details

Immunogen:	A portion of amino acids 177-205 from the human protein was used as the immunogen for this HNF1A antibody.
Isotype:	Ig Fraction
Cross-Reactivity (Details):	Expected species reactivity: Rat
Purification:	Antigen affinity purified

## Target Details

Target:	HNF1A
Alternative Name:	HNF1A ( <a href="#">HNF1A Products</a> )
Background:	HNF1A is a transcription factor required for the expression of several liver-specific genes. This

## Target Details

protein functions as a homodimer and binds to the inverted palindrome 5'-GTTAATNATTAAC-3'.

UniProt: [P20823](#)

Pathways: [Hormone Transport](#), [Carbohydrate Homeostasis](#)

## Application Details

Application Notes: Titration of the HNF1A antibody may be required due to differences in protocols and secondary/substrate sensitivity.\. Western blot: 1:1000,Immunofluorescence: 1:10-1:50

Restrictions: For Research Use only

## Handling

Format: Liquid

Buffer: In 1X PBS, pH 7.4, with 0.09 % sodium azide

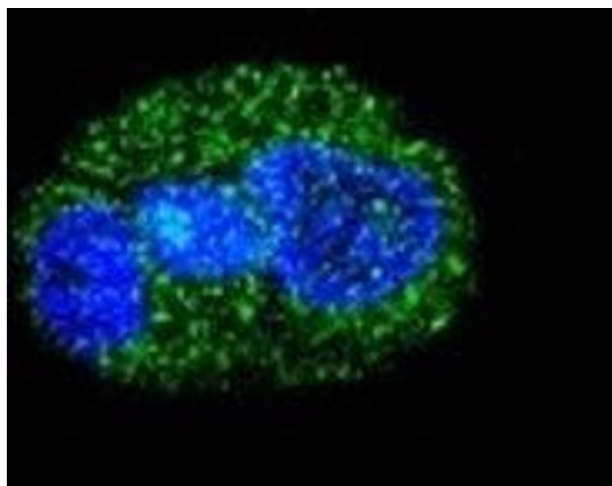
Preservative: Sodium azide

Precaution of Use: This product contains Sodium azide: a POISONOUS AND HAZARDOUS SUBSTANCE which should be handled by trained staff only.

Storage: -20 °C

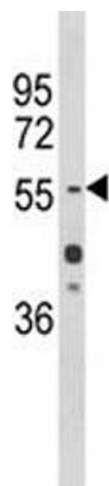
Storage Comment: Aliquot the HNF1A antibody and store frozen at -20°C or colder. Avoid repeated freeze-thaw cycles.

## Images



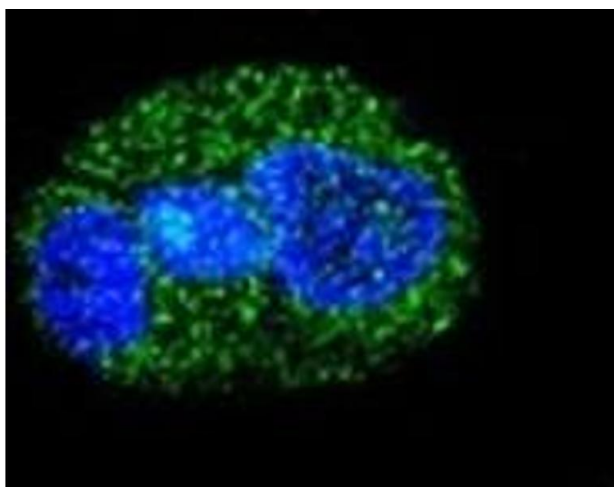
### Immunofluorescence

**Image 1.** Confocal immunofluorescent analysis of HNF1A antibody with HepG2 cells followed by Alexa Fluor 488-conjugated goat anti-rabbit IgG (green). DAPI was used as a nuclear counterstain (blue).



#### Western Blotting

**Image 2.** Western blot analysis of HNF1A antibody and mouse liver tissue lysate.



#### Immunofluorescence

**Image 3.** Confocal immunofluorescent analysis of HNF1A antibody with HepG2 cells followed by Alexa Fluor 488-conjugated goat anti-rabbit IgG (green). DAPI was used as a nuclear counterstain (blue).