

Datasheet for ABIN3028730
anti-IgH antibody (AA 290-320)

5 Images

[Go to Product page](#)

Overview

Quantity:	0.4 mL
Target:	IgH
Binding Specificity:	AA 290-320
Reactivity:	Human
Host:	Rabbit
Clonality:	Polyclonal
Conjugate:	This IgH antibody is un-conjugated
Application:	Western Blotting (WB), Flow Cytometry (FACS), Immunohistochemistry (IHC), ELISA

Product Details

Immunogen:	A portion of amino acids 290-320 from the human protein was used as the immunogen for this IGH antibody.
Isotype:	Ig Fraction
Purification:	Antigen affinity purified

Target Details

Target:	IgH
Alternative Name:	IGH (IgH Products)
Background:	Ig alpha is the major immunoglobulin class in body secretions. Ig alpha-1 chain C region/IGHA1 may serve both to defend against local infection and to prevent access of foreign antigens to the general immunologic system. [UniProt]

Target Details

UniProt: [P01876](#)

Application Details

Application Notes: Titration of the IGH antibody may be required due to differences in protocols and secondary/substrate sensitivity.\. Western blot: 1:1000,IHC (Paraffin): 1:50-1:100,Flow Cytometry: 1:10-1:50

Restrictions: For Research Use only

Handling

Format: Liquid

Buffer: In 1X PBS pH 7.4 with 0.09 % sodium azide

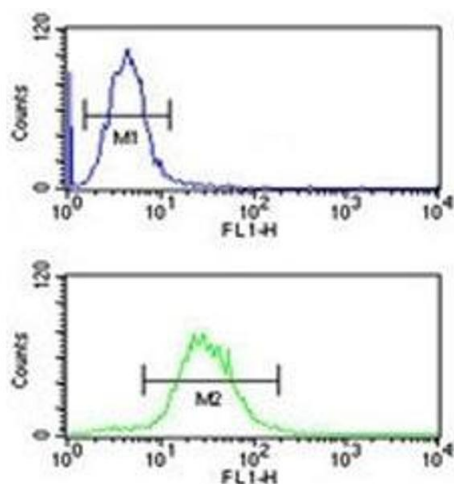
Preservative: Sodium azide

Precaution of Use: This product contains Sodium azide: a POISONOUS AND HAZARDOUS SUBSTANCE which should be handled by trained staff only.

Storage: -20 °C

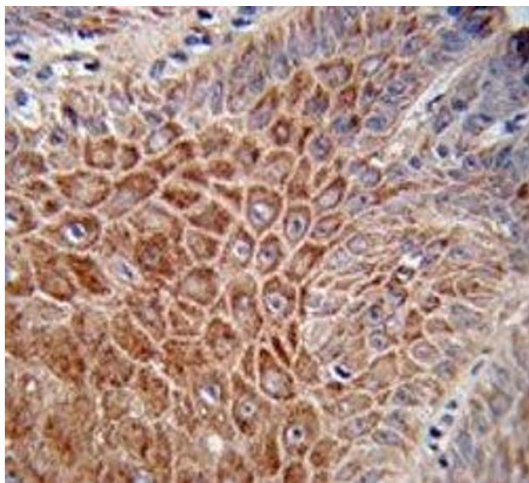
Storage Comment: Aliquot the IGH antibody and store frozen at -20°C or colder. Avoid repeated freeze-thaw cycles.

Images



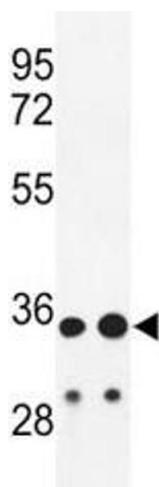
Flow Cytometry

Image 1. IGH antibody flow cytometric analysis of HL-60 cells (green) compared to a negative control cell (blue). FITC-conjugated goat-anti-rabbit secondary Ab was used for the analysis.



Immunohistochemistry

Image 2. IHC analysis of FFPE human skin stained with IGH antibody



Western Blotting

Image 3. Western blot analysis of IGH antibody and HL-60, A2058 lysate.

Please check the [product details page](#) for more images. Overall 5 images are available for ABIN3028730.