



[Go to Product page](#)

Datasheet for ABIN3028731  
**anti-IGHA1 antibody (AA 257-286)**

5 Images

Overview

Quantity:	0.4 mL
Target:	IGHA1
Binding Specificity:	AA 257-286
Reactivity:	Human
Host:	Rabbit
Clonality:	Polyclonal
Conjugate:	This IGHA1 antibody is un-conjugated
Application:	ELISA, Flow Cytometry (FACS), Immunohistochemistry (IHC), Western Blotting (WB)

Product Details

Immunogen:	A portion of amino acids 257-286 from the human protein was used as the immunogen for this IGHA1 antibody.
Isotype:	Ig Fraction
Purification:	Purified

Target Details

Target:	IGHA1
Alternative Name:	IGHA1 ( <a href="#">IGHA1 Products</a> )
Background:	Ig alpha is the major immunoglobulin class in body secretions. The protein may serve both to defend against local infection and to prevent access of foreign antigens to the general immunologic system.

## Target Details

UniProt: [P01876](#)

## Application Details

Application Notes: Titration of the IGHA1 antibody may be required due to differences in protocols and secondary/substrate sensitivity.\. Western blot: 1:1000,IHC (Paraffin): 1:50-1:100,Flow Cytometry: 1:10-1:50

Restrictions: For Research Use only

## Handling

Format: Liquid

Buffer: In 1X PBS pH 7.4 with 0.09 % sodium azide

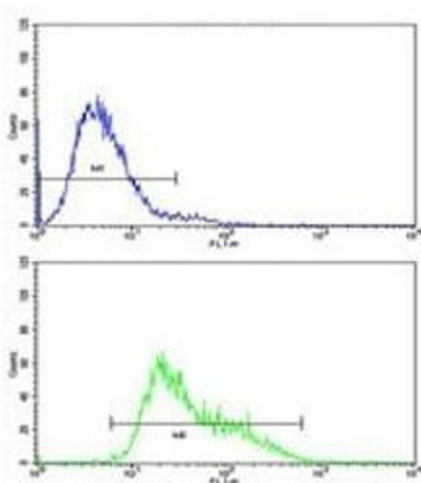
Preservative: Sodium azide

Precaution of Use: This product contains Sodium azide: a POISONOUS AND HAZARDOUS SUBSTANCE which should be handled by trained staff only.

Storage: -20 °C

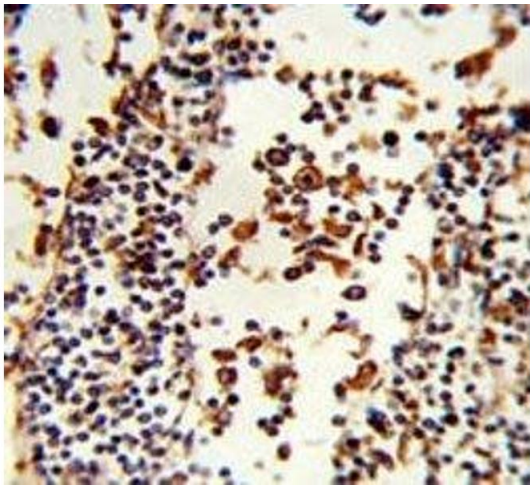
Storage Comment: Aliquot the IGHA1 antibody and store frozen at -20°C or colder. Avoid repeated freeze-thaw cycles.

## Images



### Flow Cytometry

**Image 1.** Flow cytometric analysis of CEM cells using IGHA1 antibody (bottom histogram) compared to a negative control (top histogram). FITC-conjugated goat-anti-rabbit secondary Ab was used for the analysis.



### Immunohistochemistry

**Image 2.** IHC analysis of FFPE human lymph tissue stained with IGHA1 antibody



### Western Blotting

**Image 3.** Western blot analysis of IGHA1 antibody and CEM lysate.

Please check the [product details page](#) for more images. Overall 5 images are available for ABIN3028731.