

Datasheet for ABIN3028735
anti-IKKi/IKKe antibody (AA 470-498)



[Go to Product page](#)

2 Images

Overview

Quantity:	0.4 mL
Target:	IKKi/IKKe (IKBKE)
Binding Specificity:	AA 470-498
Reactivity:	Mouse
Host:	Rabbit
Clonality:	Polyclonal
Conjugate:	This IKKi/IKKe antibody is un-conjugated
Application:	Western Blotting (WB), ELISA

Product Details

Immunogen:	A portion of amino acids 470-498 from the mouse protein was used as the immunogen for this Ikbke antibody.
Isotype:	Ig Fraction
Purification:	Antigen affinity purified

Target Details

Target:	IKKi/IKKe (IKBKE)
Alternative Name:	Ikbke (IKBKE Products)
Background:	Phosphorylates inhibitors of NF-kappa-B thus leading to the dissociation of the inhibitor/NF-kappa-B complex and ultimately the degradation of the inhibitor. May play a special role in the immune response. Protects cells against DNA damage-induced cell death (By similarity).

Target Details

UniProt: [Q9R0T8](#)

Pathways: [TLR Signaling](#), [Activation of Innate immune Response](#), [Hepatitis C](#), [Toll-Like Receptors Cascades](#)

Application Details

Application Notes: Titration of the Ikbke antibody may be required due to differences in protocols and secondary/substrate sensitivity.\. Western blot: 1:1000

Restrictions: For Research Use only

Handling

Format: Liquid

Buffer: In 1X PBS, pH 7.4, with 0.09 % sodium azide

Preservative: Sodium azide

Precaution of Use: This product contains Sodium azide: a POISONOUS AND HAZARDOUS SUBSTANCE which should be handled by trained staff only.

Storage: -20 °C

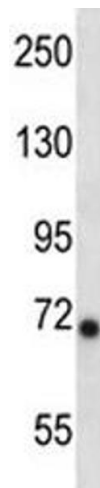
Storage Comment: Aliquot the Ikbke antibody and store frozen at -20°C or colder. Avoid repeated freeze-thaw cycles.

Images



Western Blotting

Image 1. Ikbke antibody western blot analysis in mouse liver tissue lysate.



Western Blotting

Image 2. Ikbke antibody western blot analysis in mouse liver tissue lysate.