

Datasheet for ABIN3028740
anti-INSRR antibody (C-Term)[Go to Product page](#)

2 Images

Overview

Quantity:	0.4 mL
Target:	INSRR
Binding Specificity:	AA 1265-1295, C-Term
Reactivity:	Mouse, Rat
Host:	Rabbit
Clonality:	Polyclonal
Conjugate:	This INSRR antibody is un-conjugated
Application:	Western Blotting (WB), ELISA

Product Details

Immunogen:	This mouse Insrr antibody was produced from a rabbit immunized with a KLH conjugated synthetic peptide between 1265-1295 amino acids from the C-terminal region of mouse Insrr.
Isotype:	Ig Fraction
Purification:	Antigen affinity purified

Target Details

Target:	INSRR
Alternative Name:	Insrr (INSRR Products)
Background:	Receptor with tyrosine-protein kinase activity. Functions as a pH sensing receptor which is activated by increased extracellular pH . Activates an intracellular signaling pathway that involves IRS1 and AKT1/PKB.

Target Details

UniProt: [Q9WTL4](#)

Pathways: [RTK Signaling](#)

Application Details

Application Notes: Titration of the mouse Insrr antibody may be required due to differences in protocols and secondary/substrate sensitivity.\. Western blot: 1:1000

Restrictions: For Research Use only

Handling

Format: Liquid

Buffer: In 1X PBS pH 7.4 with 0.09 % sodium azide

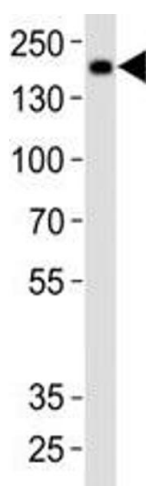
Preservative: Sodium azide

Precaution of Use: This product contains Sodium azide: a POISONOUS AND HAZARDOUS SUBSTANCE which should be handled by trained staff only.

Storage: -20 °C

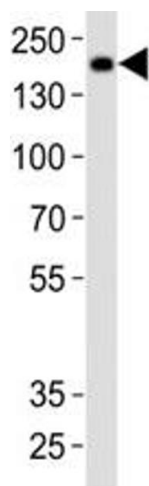
Storage Comment: Aliquot the mouse Insrr antibody and store frozen at -20°C or colder. Avoid repeated freeze-thaw cycles.

Images



Western Blotting

Image 1. Western blot analysis of lysate from rat brain tissue using Insrr antibody at 1:1000. Expected size: ~80 kDa, 144 kDa



Western Blotting

Image 2. Western blot analysis of lysate from rat brain tissue using Insrr antibody at 1:1000. Expected size: ~80 kDa, 144 kDa