

Datasheet for ABIN3028749
anti-IFNB1 antibody (AA 39-66)

5 Images

[Go to Product page](#)

Overview

Quantity:	0.4 mL
Target:	IFNB1
Binding Specificity:	AA 39-66
Reactivity:	Human
Host:	Rabbit
Clonality:	Polyclonal
Conjugate:	This IFNB1 antibody is un-conjugated
Application:	Western Blotting (WB), Immunohistochemistry (IHC), ELISA, Flow Cytometry (FACS)

Product Details

Immunogen:	A portion of amino acids 39-66 from the human protein was used as the immunogen for this Interferon beta antibody.
Isotype:	Ig Fraction
Cross-Reactivity (Details):	Expected species reactivity: Primate
Purification:	Antigen affinity purified

Target Details

Target:	IFNB1
Alternative Name:	Interferon beta (IFNB1 Products)
Background:	IFNB1 has antiviral, antibacterial and anticancer activities.

Target Details

UniProt: [P01574](#)

Pathways: [JAK-STAT Signaling](#), [TCR Signaling](#), [TLR Signaling](#), [Regulation of Leukocyte Mediated Immunity](#), [Production of Molecular Mediator of Immune Response](#), [Positive Regulation of Endopeptidase Activity](#), [Hepatitis C](#), [Autophagy](#), [Inflammasome](#)

Application Details

Application Notes: Titration of the Interferon beta antibody may be required due to differences in protocols and secondary/substrate sensitivity.\. Western blot: 1:1000,IHC (Paraffin): 1:10-1:50,Flow Cytometry: 1:10-1:50

Restrictions: For Research Use only

Handling

Format: Liquid

Buffer: In 1X PBS, pH 7.4, with 0.09 % sodium azide

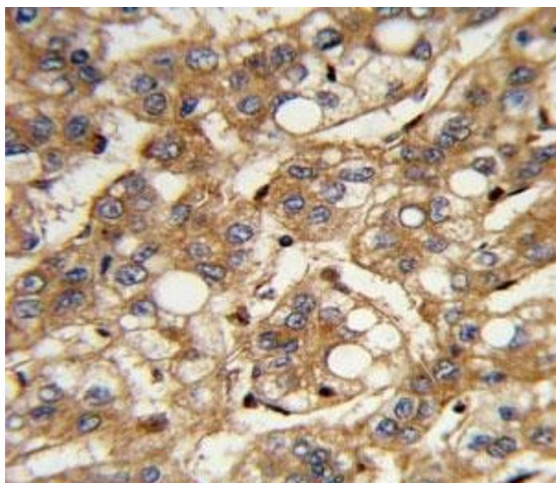
Preservative: Sodium azide

Precaution of Use: This product contains Sodium azide: a POISONOUS AND HAZARDOUS SUBSTANCE which should be handled by trained staff only.

Storage: -20 °C

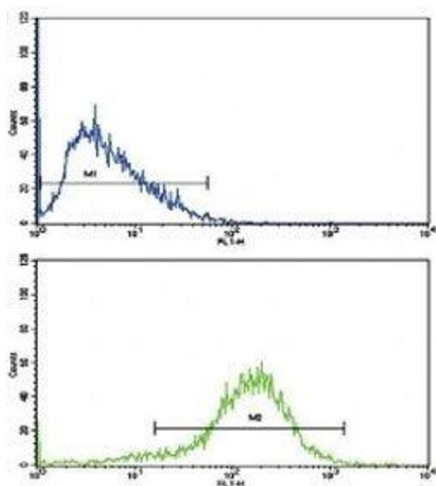
Storage Comment: Aliquot the Interferon beta antibody and store frozen at -20°C or colder. Avoid repeated freeze-thaw cycles.

Images



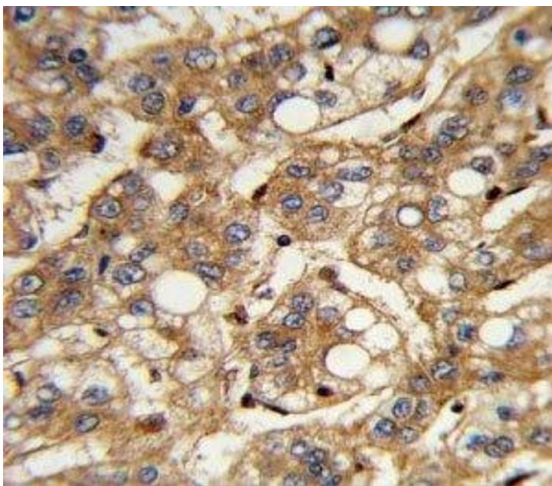
Immunohistochemistry

Image 1. IHC analysis of FFPE human hepatocarcinoma with IFNB1 antibody



Flow Cytometry

Image 2. Flow cytometric analysis of HepG2 cells using IFNB1 antibody (blue) compared to a negative control (green). FITC-conjugated goat-anti-rabbit secondary Ab was used for the analysis.



Immunohistochemistry

Image 3. IHC analysis of FFPE human hepatocarcinoma with IFNB1 antibody

Please check the [product details page](#) for more images. Overall 5 images are available for ABIN3028749.