

Datasheet for ABIN3028756  
**anti-IL17RE antibody (AA 87-116)**[Go to Product page](#)

## 2 Images

## Overview

Quantity:	0.4 mL
Target:	IL17RE
Binding Specificity:	AA 87-116
Reactivity:	Human
Host:	Rabbit
Clonality:	Polyclonal
Conjugate:	This IL17RE antibody is un-conjugated
Application:	Western Blotting (WB), ELISA

## Product Details

Immunogen:	A portion of amino acids 87-116 from the human protein was used as the immunogen for this IL17RE antibody.
Isotype:	Ig Fraction
Purification:	Antigen affinity purified

## Target Details

Target:	IL17RE
Alternative Name:	IL17RE ( <a href="#">IL17RE Products</a> )
Background:	This gene encodes a protein that shares limited similarity with the interleukin-17 receptor. The function of the encoded protein has not yet been determined. Alternatively spliced transcript variants have been described.

## Target Details

UniProt: [Q8NFR9](#)

## Application Details

Application Notes: Titration of the IL17RE antibody may be required due to differences in protocols and secondary/substrate sensitivity.\. Western blot: 1:1000

Restrictions: For Research Use only

## Handling

Format: Liquid

Buffer: In 1X PBS, pH 7.4, with 0.09 % sodium azide

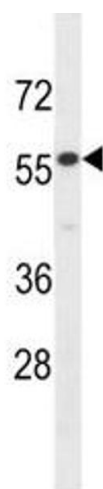
Preservative: Sodium azide

Precaution of Use: This product contains Sodium azide: a POISONOUS AND HAZARDOUS SUBSTANCE which should be handled by trained staff only.

Storage: -20 °C

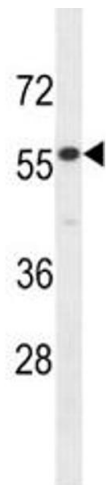
Storage Comment: Aliquot the IL17RE antibody and store frozen at -20°C or colder. Avoid repeated freeze-thaw cycles.

## Images



### Western Blotting

**Image 1.** IL17RE antibody western blot analysis in HepG2 lysate.



Western Blotting

**Image 2.** IL17RE antibody western blot analysis in HepG2 lysate.