

Datasheet for ABIN3028771  
**anti-ISL2 antibody (AA 1-30)**[Go to Product page](#)

## 3 Images

## Overview

Quantity:	0.4 mL
Target:	ISL2
Binding Specificity:	AA 1-30
Reactivity:	Human
Host:	Rabbit
Clonality:	Polyclonal
Conjugate:	This ISL2 antibody is un-conjugated
Application:	Western Blotting (WB), ELISA, Immunofluorescence (IF)

## Product Details

Immunogen:	A portion of amino acids 1-30 from the human protein was used as the immunogen for this ISL2 antibody.
Isotype:	Ig Fraction
Cross-Reactivity (Details):	Expected species reactivity: Mouse, Rat
Purification:	Antigen affinity purified

## Target Details

Target:	ISL2
Alternative Name:	ISL2 ( <a href="#">ISL2 Products</a> )
Background:	ISL2 is a transcriptional factor that defines subclasses of motoneurons that segregate into

## Target Details

columns in the spinal cord and select distinct axon pathways (By similarity).

UniProt: [Q96A47](#)

## Application Details

Application Notes: Titration of the ISL2 antibody may be required due to differences in protocols and secondary/substrate sensitivity.\. Immunofluorescence: 1:10-1:50,Western blot: 1:1000

Restrictions: For Research Use only

## Handling

Format: Liquid

Buffer: In 1X PBS, pH 7.4, with 0.09 % sodium azide

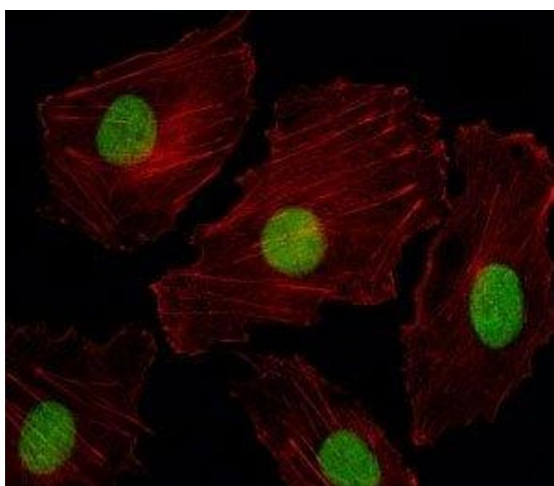
Preservative: Sodium azide

Precaution of Use: This product contains Sodium azide: a POISONOUS AND HAZARDOUS SUBSTANCE which should be handled by trained staff only.

Storage: -20 °C

Storage Comment: Aliquot the ISL2 antibody and store frozen at -20°C or colder. Avoid repeated freeze-thaw cycles.

## Images



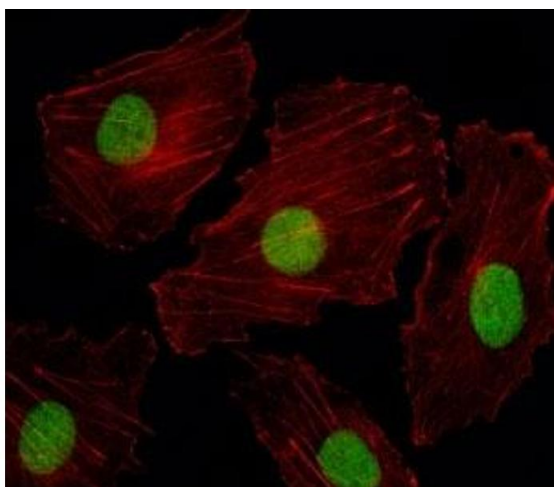
### Immunofluorescence

**Image 1.** Fluorescent image of HUVEC cells stained with ISL2 antibody. Alexa Fluor 488 secondary was used. Cytoplasmic actin was counterstained with Alexa Fluor 555 (red) conjugated Phalloidin. ISL2 immunoreactivity is localized to the nucleus.



#### Western Blotting

**Image 2.** ISL2 antibody western blot analysis in A2058 lysate



#### Immunofluorescence

**Image 3.** Fluorescent image of HUVEC cells stained with ISL2 antibody. Alexa Fluor 488 secondary was used. Cytoplasmic actin was counterstained with Alexa Fluor 555 (red) conjugated Phalloidin. ISL2 immunoreactivity is localized to the nucleus.