

Datasheet for ABIN3028784
anti-KLF2 antibody (AA 13-42)



[Go to Product page](#)

2 Images

Overview

Quantity:	0.4 mL
Target:	KLF2
Binding Specificity:	AA 13-42
Reactivity:	Human, Mouse
Host:	Rabbit
Clonality:	Polyclonal
Conjugate:	This KLF2 antibody is un-conjugated
Application:	Western Blotting (WB), ELISA

Product Details

Immunogen:	A portion of amino acids 13-42 from the human protein was used as the immunogen for this KLF2 antibody.
Isotype:	Ig Fraction
Purification:	Antigen affinity purified

Target Details

Target:	KLF2
Alternative Name:	KLF2 (KLF2 Products)
Background:	KLF2 binds to the CACCC box in the beta-globin gene promoter and activates transcription (By similarity). [UniProt]

Target Details

UniProt: [Q9Y5W3](#)

Application Details

Application Notes: Titration of the KLF2 antibody may be required due to differences in protocols and secondary/substrate sensitivity.\. Western blot: 1:1000

Restrictions: For Research Use only

Handling

Format: Liquid

Buffer: In 1X PBS, pH 7.4, with 0.09 % sodium azide

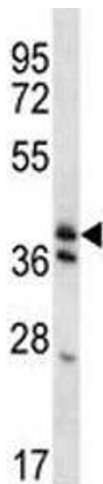
Preservative: Sodium azide

Precaution of Use: This product contains Sodium azide: a POISONOUS AND HAZARDOUS SUBSTANCE which should be handled by trained staff only.

Storage: -20 °C

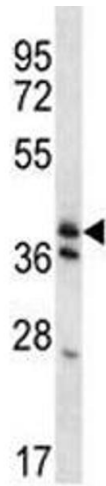
Storage Comment: Aliquot the KLF2 antibody and store frozen at -20°C or colder. Avoid repeated freeze-thaw cycles.

Images



Western Blotting

Image 1. KLF2 antibody western blot analysis in mouse heart tissue lysate. Predicted molecular weight ~38 kDa.



Western Blotting

Image 2. KLF2 antibody western blot analysis in mouse heart tissue lysate. Predicted molecular weight ~38 kDa.