

Datasheet for ABIN3028790  
**anti-LGR5 antibody (AA 689-719)**

## 5 Images

[Go to Product page](#)

## Overview

Quantity:	0.2 mL
Target:	LGR5
Binding Specificity:	AA 689-719
Reactivity:	Human, Mouse, Rat
Host:	Rabbit
Clonality:	Polyclonal
Conjugate:	This LGR5 antibody is un-conjugated
Application:	Western Blotting (WB), Flow Cytometry (FACS), ELISA, Immunofluorescence (IF)

## Product Details

Immunogen:	A portion of amino acids 689-719 from the human protein was used as the immunogen for this LGR-5 antibody.
Isotype:	Ig Fraction
Purification:	Antigen affinity purified

## Target Details

Target:	LGR5
Alternative Name:	LGR-5 ( <a href="#">LGR5 Products</a> )
Background:	LGR5 is expressed across a diverse range of tissue such as in the muscle, placenta, spinal cord and brain and particularly as a biomarker of adult stem cells in certain tissues. [Wiki]

## Target Details

UniProt: [O75473](#)

Pathways: [WNT Signaling](#)

## Application Details

Application Notes: Titration of the LGR-5 antibody may be required due to differences in protocols and secondary/substrate sensitivity.\. Western blot: 1:1000

Restrictions: For Research Use only

## Handling

Format: Liquid

Buffer: In 1X PBS pH 7.4 with 0.09 % sodium azide

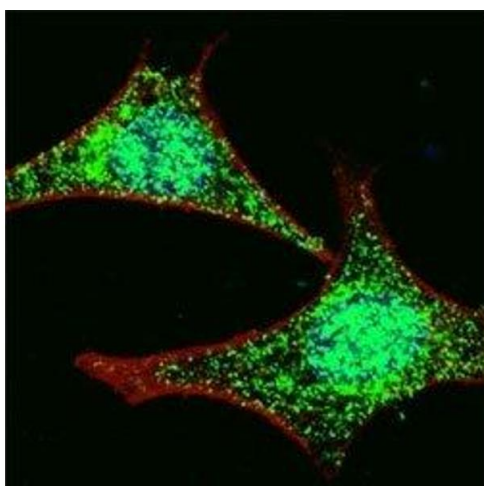
Preservative: Sodium azide

Precaution of Use: This product contains Sodium azide: a POISONOUS AND HAZARDOUS SUBSTANCE which should be handled by trained staff only.

Storage: -20 °C

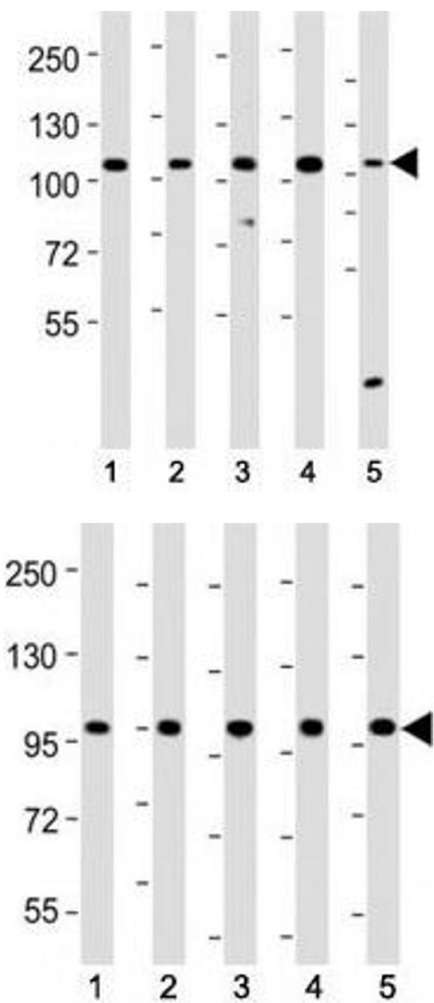
Storage Comment: Aliquot the LGR-5 antibody and store frozen at -20°C or colder. Avoid repeated freeze-thaw cycles.

## Images



### Immunofluorescence

**Image 1.** Fluorescent confocal image of HeLa cells stained with LGR-5 antibody at 1:100. Note the highly specific localization of the LGR5 immunosignal to the nucleus and cytoplasm.



#### Western Blotting

**Image 2.** Western blot testing of LGR-5 antibody at 1:2000 dilution. Lane 1: HeLa lysate; 2: HepG2; 3: mouse cerebellum; 4: mouse skeletal muscle lysate; 5: SH-SY5Y; Predicted band size : 100 kDa.

#### Western Blotting

**Image 3.** Western blot testing of LGR-5 antibody at 1:2000 dilution. Lane 1: mouse skeletal muscle; 2: rat skeletal muscle; 3: HeLa; 4: HepG2; 5: SH-SY5Y lysate; Predicted band size : 100 kDa.

Please check the [product details page](#) for more images. Overall 5 images are available for ABIN3028790.