



[Go to Product page](#)

Datasheet for ABIN3028796
anti-LRIG2 antibody (AA 817-845)

3 Images

Overview

Quantity:	0.4 mL
Target:	LRIG2
Binding Specificity:	AA 817-845
Reactivity:	Mouse
Host:	Rabbit
Clonality:	Polyclonal
Conjugate:	This LRIG2 antibody is un-conjugated
Application:	Western Blotting (WB), ELISA, Immunohistochemistry (IHC)

Product Details

Immunogen:	A portion of amino acids 817-845 from the human protein was used as the immunogen for this LRIG2 antibody.
Isotype:	Ig Fraction
Purification:	Antigen affinity purified

Target Details

Target:	LRIG2
Alternative Name:	LRIG2 (LRIG2 Products)
Background:	Leucine-rich repeats and immunoglobulin-like domains protein 2
UniProt:	O94898

Application Details

Application Notes: Titration of the LRIG2 antibody may be required due to differences in protocols and secondary/substrate sensitivity.\. Western blot: 1:1000,IHC (Paraffin): 1:10-1:50

Restrictions: For Research Use only

Handling

Format: Liquid

Buffer: In 1X PBS, pH 7.4, with 0.09 % sodium azide

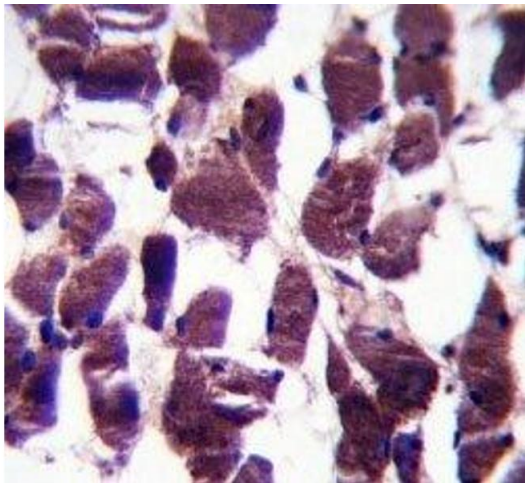
Preservative: Sodium azide

Precaution of Use: This product contains Sodium azide: a POISONOUS AND HAZARDOUS SUBSTANCE which should be handled by trained staff only.

Storage: -20 °C

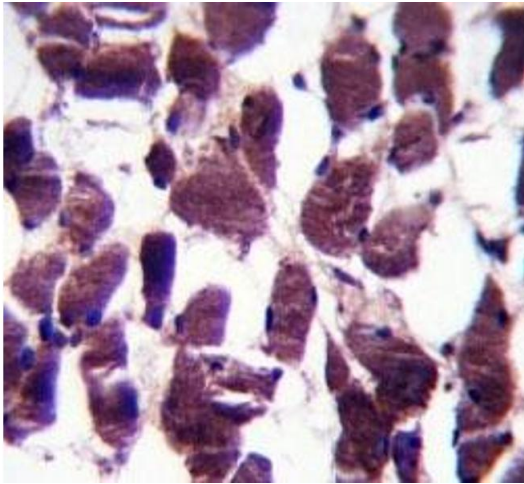
Storage Comment: Aliquot the LRIG2 antibody and store frozen at -20°C or colder. Avoid repeated freeze-thaw cycles.

Images



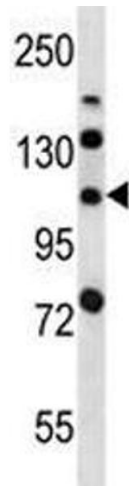
Immunohistochemistry

Image 1. LRIG2 antibody immunohistochemistry analysis in formalin fixed and paraffin embedded human skeletal muscle.



Immunohistochemistry

Image 2. LRIG2 antibody immunohistochemistry analysis in formalin fixed and paraffin embedded human skeletal muscle.



Western Blotting

Image 3. LRIG2 antibody western blot analysis in mouse bladder tissue lysate.