

Datasheet for ABIN3028803

**anti-LHX2 antibody****2** Images[Go to Product page](#)

## Overview

Quantity:	0.4 mL
Target:	LHX2
Reactivity:	Human
Host:	Mouse
Clonality:	Monoclonal
Conjugate:	This LHX2 antibody is un-conjugated
Application:	Western Blotting (WB), ELISA

## Product Details

Immunogen:	This LHX2 antibody was produced from a mouse immunized with LHX2 recombinant protein.
Clone:	285CT11-1-1
Isotype:	IgM kappa
Purification:	Purified

## Target Details

Target:	LHX2
Alternative Name:	LHX2 ( <a href="#">LHX2 Products</a> )
Background:	This gene encodes a protein belonging to a large protein family, members of which carry the LIM domain, a unique cysteine-rich zinc-binding domain. The encoded protein may function as a transcriptional regulator. The protein can recapitulate or rescue phenotypes in Drosophila caused by a related protein, suggesting conservation of function during evolution. [provided by

## Target Details

RefSeq].

UniProt: [P50458](#)

Pathways: [Tube Formation](#)

## Application Details

Application Notes: Titration of the LHX2 antibody may be required due to differences in protocols and secondary/substrate sensitivity.\. Western blot: 1:100-1:250

Restrictions: For Research Use only

## Handling

Format: Liquid

Buffer: In 1X PBS, pH 7.4, with 0.09 % sodium azide

Preservative: Sodium azide

Precaution of Use: This product contains Sodium azide: a POISONOUS AND HAZARDOUS SUBSTANCE which should be handled by trained staff only.

Storage: -20 °C

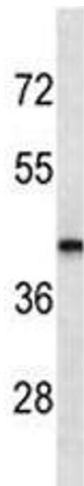
Storage Comment: Aliquot the LHX2 antibody and store frozen at -20°C or colder. Avoid repeated freeze-thaw cycles.

## Images



### Western Blotting

**Image 1.** LHX2 antibody western blot analysis in MDA-MB435 lysate.



Western Blotting

**Image 2.** LHX2 antibody western blot analysis in MDA-MB435 lysate.