

Datasheet for ABIN3028806  
**anti-LIN28A antibody (pSer134)**[Go to Product page](#)

## 3 Images

## Overview

Quantity:	0.4 mL
Target:	LIN28A
Binding Specificity:	pSer134
Reactivity:	Human
Host:	Rabbit
Clonality:	Polyclonal
Conjugate:	This LIN28A antibody is un-conjugated
Application:	ELISA, Immunofluorescence (IF), Dot Blot (DB)

## Product Details

Immunogen:	This phospho-LIN28 antibody was produced from rabbits immunized with a KLH conjugated synthetic phosphopeptide corresponding to amino acid residues surrounding pS134 of human LIN28.
Isotype:	Ig Fraction
Purification:	Antigen affinity purified

## Target Details

Target:	LIN28A
Alternative Name:	LIN28 ( <a href="#">LIN28A Products</a> )
Background:	LIN28 is probable transcription factor. It plays a critical role in the control of immune response.

## Target Details

UniProt:	<a href="#">Q9H9Z2</a>
Pathways:	<a href="#">Stem Cell Maintenance</a>

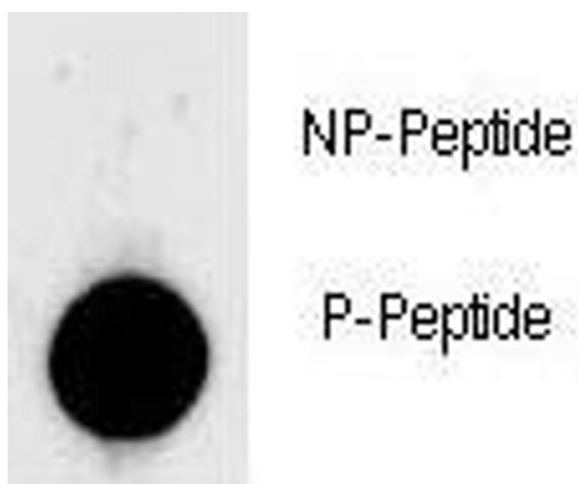
## Application Details

Application Notes:	Titration of the phospho-LIN28 antibody may be required due to differences in protocols and secondary/substrate sensitivity.\. Immunofluorescence: 1:100, Dot blot: 1:500
Restrictions:	For Research Use only

## Handling

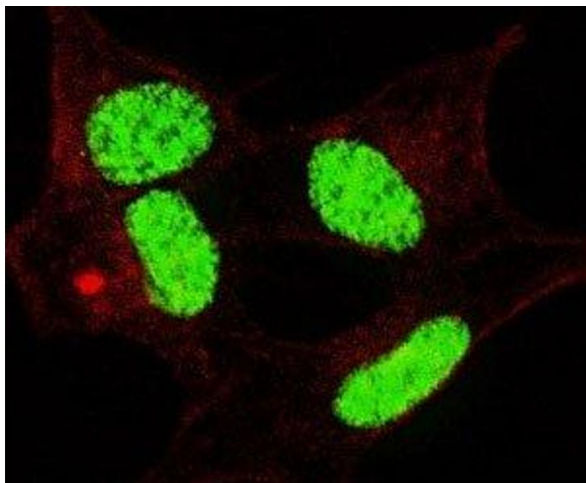
Format:	Liquid
Buffer:	In 1X PBS, pH 7.4, with 0.09 % sodium azide
Preservative:	Sodium azide
Precaution of Use:	This product contains Sodium azide: a POISONOUS AND HAZARDOUS SUBSTANCE which should be handled by trained staff only.
Storage:	-20 °C
Storage Comment:	Aliquot the phospho-LIN28 antibody and store frozen at -20°C or colder. Avoid repeated freeze-thaw cycles.

## Images



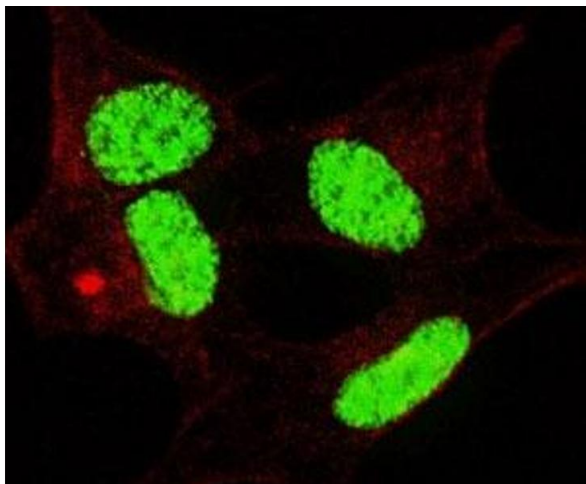
### Dot Blot

**Image 1.** Dot blot analysis of phospho-LIN28 antibody. 50ng of phos-peptide or nonphos-peptide per dot were spotted.



#### Immunofluorescence

**Image 2.** Fluorescent confocal image of SY5Y cells stained with phospho-LIN28 antibody. Alexa Fluor 488 conjugated secondary (green) was used. Nuclei were counterstained with Hoechst 33342 (blue). Note the highly specific localization of the immunosignal to the nuc



#### Immunofluorescence

**Image 3.** Fluorescent confocal image of SY5Y cells stained with phospho-LIN28 antibody. Alexa Fluor 488 conjugated secondary (green) was used. Nuclei were counterstained with Hoechst 33342 (blue). Note the highly specific localization of the immunosignal to the nucleus.