



[Go to Product page](#)

Datasheet for ABIN3028807  
**anti-LRP6 antibody (AA 1531-1560)**

3 Images

### Overview

Quantity:	0.4 mL
Target:	LRP6
Binding Specificity:	AA 1531-1560
Reactivity:	Human
Host:	Rabbit
Clonality:	Polyclonal
Conjugate:	This LRP6 antibody is un-conjugated
Application:	Western Blotting (WB), Immunohistochemistry (IHC), ELISA

### Product Details

Immunogen:	A portion of amino acids 1531-1560 from the human protein was used as the immunogen for this LRP6 antibody.
Isotype:	Ig Fraction
Purification:	Purified

### Target Details

Target:	LRP6
Alternative Name:	LRP6 ( <a href="#">LRP6 Products</a> )
Background:	LRP6 is essential for the Wnt/beta catenin signaling pathway, probably by acting as a coreceptor together with Frizzled for Wnt. It is a specific, high-affinity receptor for DKK1 and DKK2, but not DKK3. The interaction with DKK1 blocks LRP6-mediated Wnt/beta catenin

## Target Details

signaling via LRP6 removal via Kremen proteins-mediated endocytosis.

UniProt: [O75581](#)

Pathways: [WNT Signaling](#), [Tube Formation](#)

## Application Details

Application Notes: Titration of the LRP6 antibody may be required due to differences in protocols and secondary/substrate sensitivity.\. Western blot: 1:1000,IHC (Paraffin): 1:10-1:50

Restrictions: For Research Use only

## Handling

Format: Liquid

Buffer: In 1X PBS, pH 7.4, with 0.09 % sodium azide

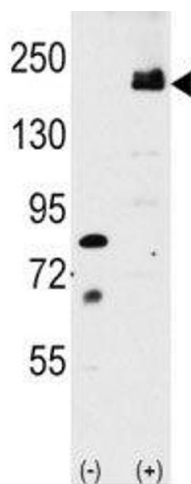
Preservative: Sodium azide

Precaution of Use: This product contains Sodium azide: a POISONOUS AND HAZARDOUS SUBSTANCE which should be handled by trained staff only.

Storage: -20 °C

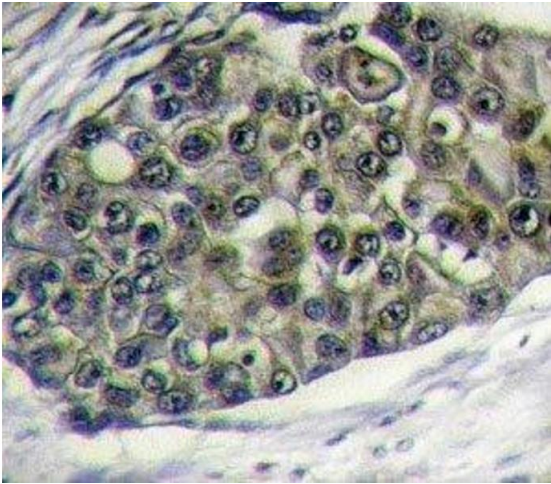
Storage Comment: Aliquot the LRP6 antibody and store frozen at -20°C or colder. Avoid repeated freeze-thaw cycles.

## Images



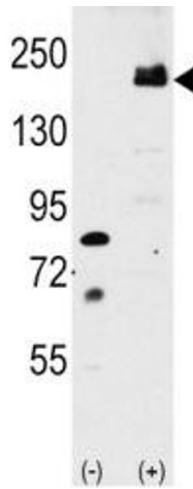
### Western Blotting

**Image 1.** Western blot analysis of LRP6 antibody and 293 cell lysate either nontransfected or transiently transfected with the LRP6 gene.



### Immunohistochemistry

**Image 2.** IHC analysis of FFPE human breast carcinoma tissue stained with LRP6 antibody



### Western Blotting

**Image 3.** Western blot analysis of LRP6 antibody and 293 cell lysate either nontransfected or transiently transfected with the LRP6 gene.