



[Go to Product page](#)

Datasheet for ABIN3028815
anti-LAMP3 antibody (AA 8-38)

3 Images

Overview

Quantity:	0.4 mL
Target:	LAMP3
Binding Specificity:	AA 8-38
Reactivity:	Human
Host:	Rabbit
Clonality:	Polyclonal
Conjugate:	This LAMP3 antibody is un-conjugated
Application:	Western Blotting (WB), ELISA, Immunofluorescence (IF)

Product Details

Immunogen:	A portion of amino acids 8-38 from the human protein was used as the immunogen for this LAMP3 antibody.
Isotype:	Ig Fraction
Purification:	Antigen affinity purified

Target Details

Target:	LAMP3
Alternative Name:	LAMP3 (LAMP3 Products)
Background:	LAMP3 is a member of a family of membrane glycoproteins. It may change lysosome function after the transfer of peptide-MHC class II molecules to the surface of dendritic cells.

Target Details

UniProt: [Q9UQV4](#)

Application Details

Application Notes: Titration of the LAMP3 antibody may be required due to differences in protocols and secondary/substrate sensitivity.\. Immunofluorescence: 1:100,Western blot: 1:1000

Restrictions: For Research Use only

Handling

Format: Liquid

Buffer: In 1X PBS pH 7.4 with 0.09 % sodium azide

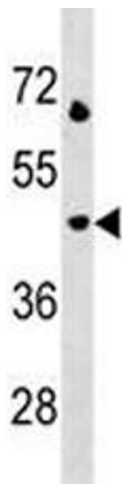
Preservative: Sodium azide

Precaution of Use: This product contains Sodium azide: a POISONOUS AND HAZARDOUS SUBSTANCE which should be handled by trained staff only.

Storage: -20 °C

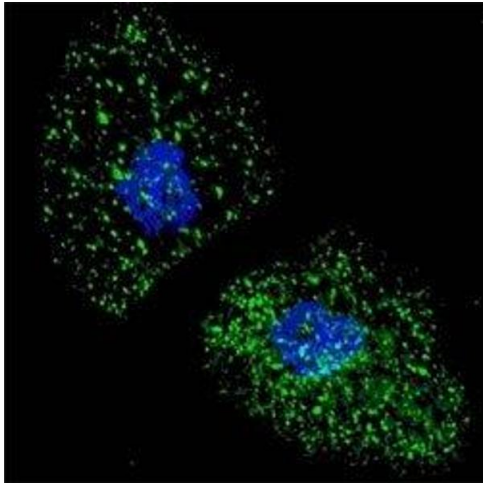
Storage Comment: Aliquot the LAMP3 antibody and store frozen at -20°C or colder. Avoid repeated freeze-thaw cycles.

Images



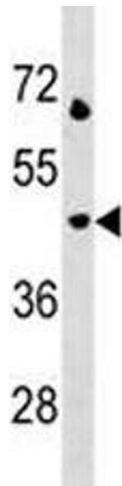
Western Blotting

Image 1. LAMP3 antibody western blot analysis in Jurkat lysate. Predicted size ~ 44 kDa



Immunofluorescence

Image 2. Fluorescent image of U251 cells stained with LAMP3 antibody at 1:100. LAMP3 immunoreactivity is localized to autophagic vacuoles in the cytoplasm.



Western Blotting

Image 3. LAMP3 antibody western blot analysis in Jurkat lysate. Predicted size ~ 44 kDa