

Datasheet for ABIN3028816
anti-LOX antibody (AA 234-260)

3 Images

[Go to Product page](#)

Overview

| | |
|----------------------|-----------------------------------------------------|
| Quantity: | 0.4 mL |
| Target: | LOX |
| Binding Specificity: | AA 234-260 |
| Reactivity: | Human |
| Host: | Rabbit |
| Clonality: | Polyclonal |
| Conjugate: | This LOX antibody is un-conjugated |
| Application: | Western Blotting (WB), ELISA, Flow Cytometry (FACS) |

Product Details

| | |
|-----------------------------|----------------------------------------------------------------------------------------------------------|
| Immunogen: | A portion of amino acids 234-260 from the human protein was used as the immunogen for this LOX antibody. |
| Isotype: | Ig Fraction |
| Cross-Reactivity (Details): | Expected species reactivity: Mouse, Rat, Pig |
| Purification: | Antigen affinity purified |

Target Details

| | |
|-------------------|----------------------------------------------------------------------------------------------------|
| Target: | LOX |
| Alternative Name: | LOX (LOX Products) |
| Background: | LOX is responsible for the post-translational oxidative deamination of peptidyl lysine residues in |

Target Details

precursors to fibrous collagen and elastin. In addition to cross-linking of extracellular matrix proteins, may have a direct role in tumor suppression. [UniProt]

UniProt: [P28300](#)

Pathways: [SARS-CoV-2 Protein Interactome](#)

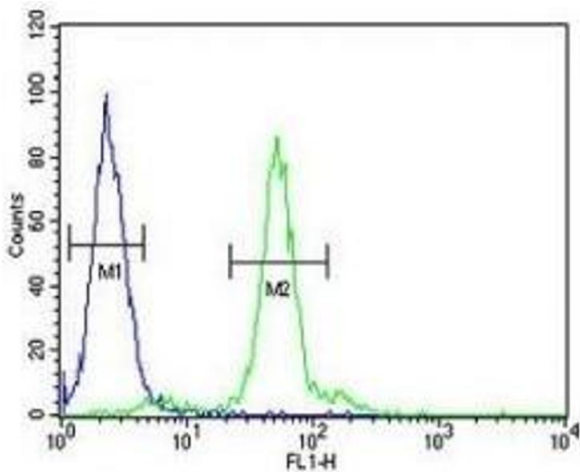
Application Details

| | |
|--------------------|---------------------------------------------------------------------------------------------------------------------------------------------------------------------|
| Application Notes: | Titration of the LOX antibody may be required due to differences in protocols and secondary/substrate sensitivity.\. Western blot: 1:1000,Flow Cytometry: 1:10-1:50 |
| Restrictions: | For Research Use only |

Handling

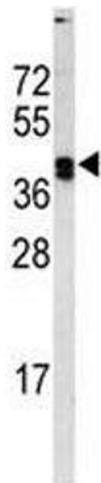
| | |
|--------------------|------------------------------------------------------------------------------------------------------------------------|
| Format: | Liquid |
| Buffer: | In 1X PBS, pH 7.4, with 0.09 % sodium azide |
| Preservative: | Sodium azide |
| Precaution of Use: | This product contains Sodium azide: a POISONOUS AND HAZARDOUS SUBSTANCE which should be handled by trained staff only. |
| Storage: | -20 °C |
| Storage Comment: | Aliquot the LOX antibody and store frozen at -20°C or colder. Avoid repeated freeze-thaw cycles. |

Images



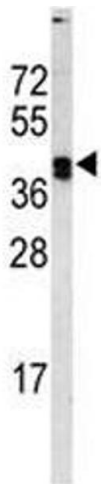
Flow Cytometry

Image 1. LOX antibody flow cytometric analysis of 293 cells (green) compared to a negative control (blue). FITC-conjugated goat-anti-rabbit secondary Ab was used for the analysis.



Western Blotting

Image 2. Western blot analysis of LOX antibody and MDA-MB468 lysate



Western Blotting

Image 3. Western blot analysis of LOX antibody and MDA-MB468 lysate