

Datasheet for ABIN3028819
anti-SLC16A1 antibody (AA 430-460)[Go to Product page](#)

2 Images

Overview

Quantity:	0.4 mL
Target:	SLC16A1
Binding Specificity:	AA 430-460
Reactivity:	Human
Host:	Rabbit
Clonality:	Polyclonal
Conjugate:	This SLC16A1 antibody is un-conjugated
Application:	Western Blotting (WB), ELISA

Product Details

Immunogen:	A portion of amino acids 430-460 from the human protein was used as the immunogen for this MCT1 antibody.
Isotype:	Ig Fraction
Purification:	Purified

Target Details

Target:	SLC16A1
Alternative Name:	MCT1 (SLC16A1) (SLC16A1 Products)
Background:	SLC16A1 is a monocarboxylate transporter (MCT1) that mediates the movement of lactate and pyruvate across cell membranes import and export of these substrates by tissues such as erythrocytes, muscle, intestine, and kidney are ascribed largely to the action of a proton-coupled

Target Details

	MCT.
UniProt:	P53985
Pathways:	Warburg Effect

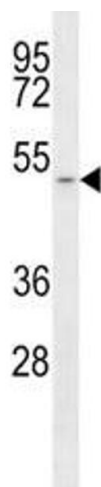
Application Details

Application Notes:	Titration of the MCT1 antibody may be required due to differences in protocols and secondary/substrate sensitivity.\. Western blot: 1:1000
Restrictions:	For Research Use only

Handling

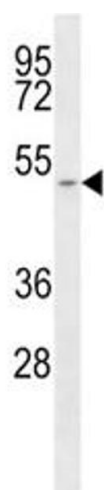
Format:	Liquid
Buffer:	In 1X PBS, pH 7.4, with 0.09 % sodium azide
Preservative:	Sodium azide
Precaution of Use:	This product contains Sodium azide: a POISONOUS AND HAZARDOUS SUBSTANCE which should be handled by trained staff only.
Storage:	-20 °C
Storage Comment:	Aliquot the MCT1 antibody and store frozen at -20°C or colder. Avoid repeated freeze-thaw cycles.

Images



Western Blotting

Image 1. Western blot analysis of SLC16A1/ MCT1 antibody and T47D lysate.



Western Blotting

Image 2. Western blot analysis of SLC16A1/ MCT1 antibody and T47D lysate.