

Datasheet for ABIN3028826
anti-MELK antibody (AA 201-230)



[Go to Product page](#)

2 Images

Overview

Quantity:	0.4 mL
Target:	MELK
Binding Specificity:	AA 201-230
Reactivity:	Human, Mouse
Host:	Rabbit
Clonality:	Polyclonal
Conjugate:	This MELK antibody is un-conjugated
Application:	Western Blotting (WB), ELISA

Product Details

Immunogen:	A portion of amino acids 201-230 from the human protein was used as the immunogen for this MELK antibody.
Isotype:	Ig Fraction
Purification:	Purified

Target Details

Target:	MELK
Alternative Name:	MELK (MELK Products)
Background:	MELK contains 1 protein kinase domain that belongs to the Ser/Thr protein kinase family. It phosphorylates ZNF622 and may contribute to its redirection to the nucleus. MELK may also be involved in the inhibition of spliceosome assembly during mitosis.

Target Details

UniProt: [Q14680](#)

Application Details

Application Notes: Titration of the MELK antibody may be required due to differences in protocols and secondary/substrate sensitivity.\. Western blot: 1:1000

Restrictions: For Research Use only

Handling

Format: Liquid

Buffer: In 1X PBS, pH 7.4, with 0.09 % sodium azide

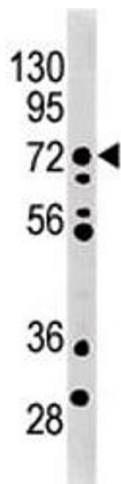
Preservative: Sodium azide

Precaution of Use: This product contains Sodium azide: a POISONOUS AND HAZARDOUS SUBSTANCE which should be handled by trained staff only.

Storage: -20 °C

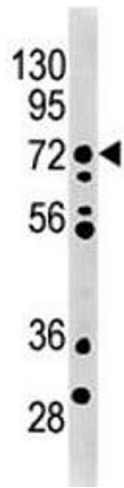
Storage Comment: Aliquot the MELK antibody and store frozen at -20°C or colder. Avoid repeated freeze-thaw cycles.

Images



Western Blotting

Image 1. MELK antibody used in western blot to detect MRLK/MELK in mouse brain tissue lysate. Predicted molecular weight ~ 73 kDa.



Western Blotting

Image 2. MELK antibody used in western blot to detect MRLK/MELK in mouse brain tissue lysate. Predicted molecular weight ~ 73 kDa.