

Datasheet for ABIN3028829
anti-MBP antibody (pTyr203)



[Go to Product page](#)

2 Images

Overview

Quantity:	0.4 mL
Target:	MBP
Binding Specificity:	pTyr203
Reactivity:	Human
Host:	Rabbit
Clonality:	Polyclonal
Conjugate:	This MBP antibody is un-conjugated
Application:	ELISA, Dot Blot (DB)

Product Details

Immunogen:	This phospho-MBP antibody was produced from rabbits immunized with a KLH conjugated synthetic phosphopeptide corresponding to amino acid residues surrounding pY203 of human MBP.
Isotype:	Ig Fraction
Purification:	Antigen affinity purified

Target Details

Target:	MBP
Alternative Name:	Myelin basic protein (MBP Products)
Background:	Myelin basic protein (MBP) is a protein believed to be important in the process of myelination of nerves in the central nervous system (CNS). The pool of MBP in the central nervous system is

Target Details

very diverse, with several splice variants being expressed and a large number of post-translational modifications on the protein, which include phosphorylation, methylation, deamidation and citrullination.

UniProt: [P02686](#)

Application Details

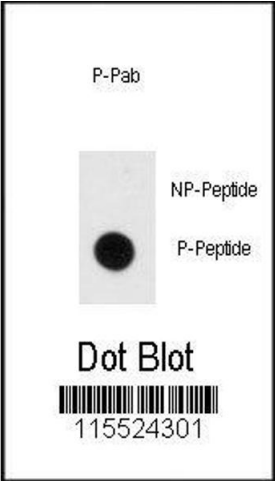
Application Notes: Titration of the phospho-MBP antibody may be required due to differences in protocols and secondary/substrate sensitivity.\. Dot blot: 1:500

Restrictions: For Research Use only

Handling

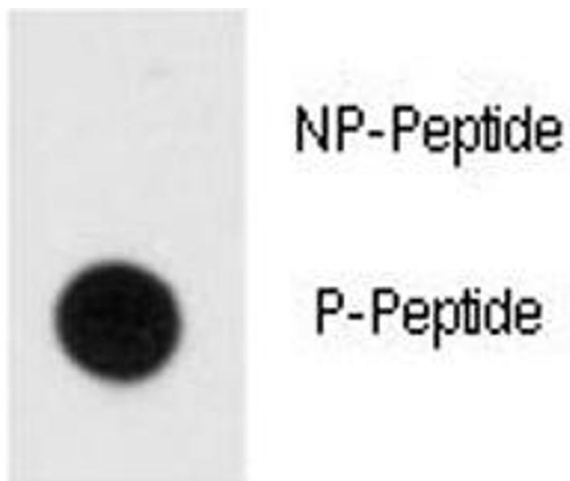
Format:	Liquid
Buffer:	In 1X PBS pH 7.4 with 0.09 % sodium azide
Preservative:	Sodium azide
Precaution of Use:	This product contains Sodium azide: a POISONOUS AND HAZARDOUS SUBSTANCE which should be handled by trained staff only.
Storage:	-20 °C
Storage Comment:	Aliquot the phospho-MBP antibody and store frozen at -20°C or colder. Avoid repeated freeze-thaw cycles.

Images



Dot Blot

Image 1. Dot blot analysis of phospho-MBP antibody. 50ng of phos-peptide or nonphos-peptide per dot were spotted.



Dot Blot

Image 2. Dot blot analysis of phospho-MBP antibody. 50ng of phos-peptide or nonphos-peptide per dot were spotted.