

Datasheet for ABIN3028840
anti-MCM6 antibody (AA 80-109)[Go to Product page](#)

3 Images

Overview

Quantity:	0.4 mL
Target:	MCM6
Binding Specificity:	AA 80-109
Reactivity:	Human
Host:	Rabbit
Clonality:	Polyclonal
Conjugate:	This MCM6 antibody is un-conjugated
Application:	Western Blotting (WB), Immunohistochemistry (IHC), ELISA

Product Details

Immunogen:	A portion of amino acids 80-109 from the human protein was used as the immunogen for this MCM6 antibody.
Isotype:	Ig Fraction
Cross-Reactivity (Details):	Expected species reactivity: Bovine
Purification:	Antigen affinity purified

Target Details

Target:	MCM6
Alternative Name:	MCM6 (MCM6 Products)
Background:	MCM6 one of the highly conserved mini-chromosome maintenance proteins (MCM) that are

Target Details

essential for the initiation of eukaryotic genome replication.

UniProt: [Q14566](#)

Pathways: [DNA Damage Repair](#), [Mitotic G1-G1/S Phases](#), [DNA Replication](#), [Synthesis of DNA](#)

Application Details

Application Notes: Titration of the MCM6 antibody may be required due to differences in protocols and secondary/substrate sensitivity.\. Western blot: 1:1000,IHC (Paraffin): 1:10-1:50

Restrictions: For Research Use only

Handling

Format: Liquid

Buffer: In 1X PBS, pH 7.4, with 0.09 % sodium azide

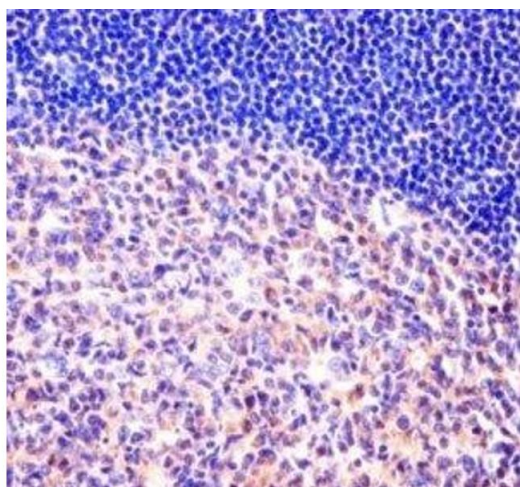
Preservative: Sodium azide

Precaution of Use: This product contains Sodium azide: a POISONOUS AND HAZARDOUS SUBSTANCE which should be handled by trained staff only.

Storage: -20 °C

Storage Comment: Aliquot the MCM6 antibody and store frozen at -20°C or colder. Avoid repeated freeze-thaw cycles.

Images



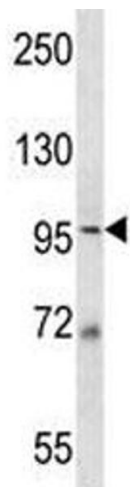
Immunohistochemistry

Image 1. MCM6 antibody immunohistochemistry analysis in formalin fixed and paraffin embedded human tonsil tissue.



Western Blotting

Image 2. MCM6 antibody western blot analysis in 293 lysate.



Western Blotting

Image 3. MCM6 antibody western blot analysis in 293 lysate.