

Datasheet for ABIN3028841
anti-MCM9 antibody (AA 316-345)[Go to Product page](#)

2 Images

Overview

Quantity:	0.4 mL
Target:	MCM9
Binding Specificity:	AA 316-345
Reactivity:	Human
Host:	Rabbit
Clonality:	Polyclonal
Conjugate:	This MCM9 antibody is un-conjugated
Application:	ELISA, Western Blotting (WB)

Product Details

Immunogen:	A portion of amino acids 316-345 from the human protein was used as the immunogen for this MCM9 antibody.
Isotype:	Ig Fraction
Cross-Reactivity (Details):	Expected species reactivity: Bovine
Purification:	Antigen affinity purified

Target Details

Target:	MCM9
Alternative Name:	MCM9 (MCM9 Products)
Background:	MCM9, a member of the MCM2-8 family, binds to chromatin and is required for the recruitment

Target Details

of the MCM2-7 helicase onto chromatin. MCM9 can form a complex with Cdt1. It is thought that MCM9 might play an important role in DNA replication since its depletion results in its inhibition.

UniProt: [Q9NXL9](#)

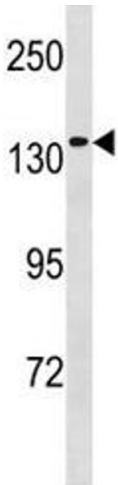
Application Details

Application Notes:	Titration of the MCM9 antibody may be required due to differences in protocols and secondary/substrate sensitivity.\. Western blot: 1:1000
Restrictions:	For Research Use only

Handling

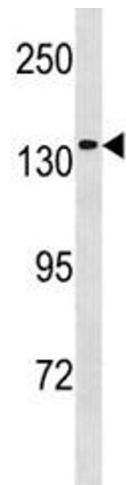
Format:	Liquid
Buffer:	In 1X PBS, pH 7.4, with 0.09 % sodium azide
Preservative:	Sodium azide
Precaution of Use:	This product contains Sodium azide: a POISONOUS AND HAZARDOUS SUBSTANCE which should be handled by trained staff only.
Storage:	-20 °C
Storage Comment:	Aliquot the MCM9 antibody and store frozen at -20°C or colder. Avoid repeated freeze-thaw cycles.

Images



Western Blotting

Image 1. MCM9 antibody western blot analysis in 293 lysate.



Western Blotting

Image 2. MCM9 antibody western blot analysis in 293 lysate.