

Datasheet for ABIN3028842

anti-MIPEP antibody

2 Images

[Go to Product page](#)

Overview

| | |
|--------------|--------------------------------------|
| Quantity: | 0.4 mL |
| Target: | MIPEP |
| Reactivity: | Human |
| Host: | Mouse |
| Clonality: | Monoclonal |
| Conjugate: | This MIPEP antibody is un-conjugated |
| Application: | Western Blotting (WB), ELISA |

Product Details

| | |
|---------------|---|
| Immunogen: | This MIPEP antibody was produced from a mouse immunized with MIPEP recombinant protein. |
| Clone: | 166CT22-3-7 |
| Isotype: | IgG1 kappa |
| Purification: | Purified |

Target Details

| | |
|-------------------|--|
| Target: | MIPEP |
| Alternative Name: | MIPEP (MIPEP Products) |
| Background: | Cleaves proteins, imported into the mitochondrion, to their mature size. |
| UniProt: | Q99797 |

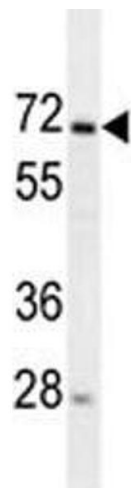
Application Details

| | |
|--------------------|---|
| Application Notes: | Titration of the MIPEP antibody may be required due to differences in protocols and secondary/substrate sensitivity.\. Western blot: 1:100-1:1000 |
| Restrictions: | For Research Use only |

Handling

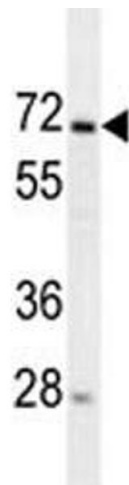
| | |
|--------------------|--|
| Format: | Liquid |
| Buffer: | In 1X PBS pH 7.4 with 0.09 % sodium azide |
| Preservative: | Sodium azide |
| Precaution of Use: | This product contains Sodium azide: a POISONOUS AND HAZARDOUS SUBSTANCE which should be handled by trained staff only. |
| Storage: | -20 °C |
| Storage Comment: | Aliquot the MIPEP antibody and store frozen at -20°C or colder. Avoid repeated freeze-thaw cycles. |

Images



Western Blotting

Image 1. MIPEP antibody western blot analysis in 293 lysate.



Western Blotting

Image 2. MIPEP antibody western blot analysis in 293 lysate.