

Datasheet for ABIN3028844

anti-MAPK15 antibody

3 Images

[Go to Product page](#)

Overview

Quantity:	0.4 mL
Target:	MAPK15
Reactivity:	Human
Host:	Mouse
Clonality:	Monoclonal
Conjugate:	This MAPK15 antibody is un-conjugated
Application:	Western Blotting (WB), ELISA, Immunofluorescence (IF)

Product Details

Immunogen:	This MAPK15 antibody was produced from a mouse immunized with MAPK15 recombinant protein.
Clone:	168CT10-6-6
Isotype:	IgG1 kappa
Purification:	Purified

Target Details

Target:	MAPK15
Alternative Name:	MAPK15 (MAPK15 Products)
Background:	In vitro, phosphorylates MBP.
UniProt:	Q8TD08

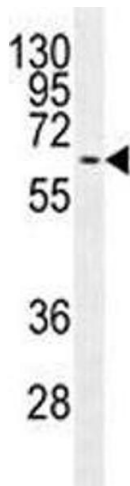
Application Details

Application Notes:	Titration of the MAPK15 antibody may be required due to differences in protocols and secondary/substrate sensitivity.\. Western blot: 1:100-1:500,Immunofluorescence: 1:10-1:50
Restrictions:	For Research Use only

Handling

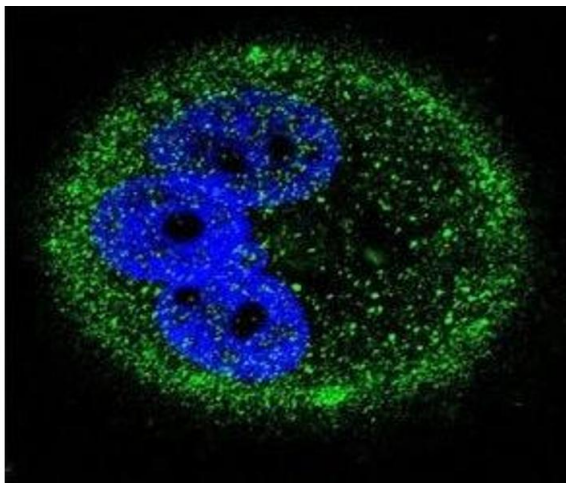
Format:	Liquid
Buffer:	In 1X PBS pH 7.4 with 0.09 % sodium azide
Preservative:	Sodium azide
Precaution of Use:	This product contains Sodium azide: a POISONOUS AND HAZARDOUS SUBSTANCE which should be handled by trained staff only.
Storage:	-20 °C
Storage Comment:	Aliquot the MAPK15 antibody and store frozen at -20°C or colder. Avoid repeated freeze-thaw cycles.

Images



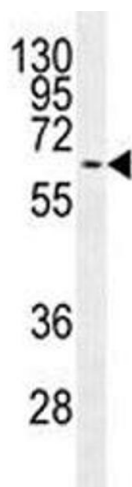
Western Blotting

Image 1. MAPK15 antibody western blot analysis in MCF-7 lysate.



Immunofluorescence

Image 2. Confocal immunofluorescent analysis of MAPK15 antibody with MCF-7 cells followed by Alexa Fluor 488-conjugated goat anti-mouse IgG (green). DAPI was used as a nuclear counterstain (blue).



Western Blotting

Image 3. MAPK15 antibody western blot analysis in MCF-7 lysate.